

1C25  
464

*45th Annual  
Production Sale*

*Evenson  
Angus*

**Thursday,  
March 20,  
2025**

**1:00 PM MST  
Lemmon Livestock Auction  
Lemmon, SD**

---

---

## William "Bill." Evenson

A STORY

By Dan Boxrud

There are many stories in this world worth listening to but one of the best and most sincere ones are told in a coffee house, around holiday tables, or in the shade of a tractor or combine on a late hot summer day. All told with a cup of coffee or red cool-aid, cookies or bars, and sometimes a sandwich or two. Bill Evenson had many of these stories, either told by him or told about him by others. They start off early in life with antics of Bill and his brothers doing chores at a young age to going right from his high school graduation to full-time on the farm. He was there in 1952 when they switched from a dairy herd to the beginnings of the registered Black Angus herd you see today. He valued the importance of a quality animal by using top genetics preparing for the spring sale insuring new and returning customers that they were getting top notch bulls.

Spring found Bill in the pasture on a four-wheeler surrounded by mother cows and their calves. Watching the newborns frolicking in the fresh green grass of the Dakota prairie. He could easily talk with great pride; about the qualities of each cow, which bull her calf was sired by, and all the numbers that will follow it throughout its life.

Spring and early summer also found other responsibilities, time to plant corn where his rows had to be perfectly straight from end to end, and the seemingly endless job of cutting and baling hay. Probably endless because this is where most farm kids got their start and have to do it the rest of their lives.

Checking fields as the summer went on to see how crops were progressing and then a new season would change the conversation to harvest. How good the silage will be, to yields on each field and how it compared to last year. All the while front and center the care of the herd. From AI-ing, vaccinations, health checks and anything else to insure they would continue to produce top quality animals.

After skipping the conversations about the never ending political debates or the best color for a farm implement green, red, or something different, the favorite conversation was about family and the accomplishments of his grandkids or 13 great grandkids. How he loved to take them by the hand to show them the candy dish so he would be their favorite. Or load them up on a four-wheeler or side-by-side to take them down to show them the new cavies. How he beamed when his name William was given to a great grandson or his newest was born 90 years to the date last December 17, to share a birthday.

The Family wishes to dedicate the 2025 Evenson Angus Bull Sale to his memory. Bill is physically absent from this year's sale but his spirit is in each and every part of Evenson Angus. From the new calves braving the deep freeze of a Dakota winter playing around in the straw piles, to the fields and pastures white with snow and the beginning of another spring.

With sincere love from His Wife Eleanora, children, grandchildren, great grandchildren, Wally & Rodney, and the rest of those family members and friends that will remember him always.

---

---

# Evenson Angus Welcome

*Welcome Fellow Cattlemen and Friends,*



*Bill & Eleanora Evenson*

Welcome to our **45th Annual Bull Sale** at Lemmon Livestock, Lemmon, South Dakota.

We have been raising Angus cattle since the 1950's. There's been a lot of ups and downs.

This year with the passing of Billy to the drought of the summer which we ended up dispersing of our fall herd to Connealy Angus.

As I sit here thinking of when I was calving fall heifers at over 100 above to now this morning at -41.

I think this year's bulls are the most consistent set of bulls from power bulls to the heifer bulls. The registered heifers - our top cut of fall cows selling as spring calving.

So come to Lemmon Livestock **March 20** to have a great roast beef dinner and view a great set of Angus bulls.

If you have any questions on any of the cattle, stop by or give me a ring.

Rodney - 701-567-3358



*Wally & Rodney Evenson*

Join us on **Thursday, March 20, 2025**

Lemmon Livestock Auction, Lemmon, South Dakota

Complimentary meal beginning at 12 noon

Sale to begin at 1:00 PM (MST)



*The Evenson Crew  
Eleanora,  
Wally, Rodney*

---

---

# Evenson Angus Production Sale

**Thursday, March 20, 2025 • 1:00 PM (MST)**

Lemmon Livestock Auction • Lemmon, SD

**SALE DAY PHONES: 800-822-8853 or 605-374-3877**

**Rodney - 701-567-3358 or Howard Sadowsky - 701-567-3692**

Auctioneer: Lynn Weishaar

*~ Selling ~*

**75 Yearling Registered Black Angus Bulls**

**40 Long Yearling Registered Black Angus Bulls**

**30 Long Yearling Registered Black Angus Heifers**

**70 Commercial Angus Heifers**

Complimentary Lunch

**TERMS: CASH.** All cattle will be sold according to the terms and conditions of the American Angus Association.  
**HERD HEALTH:** All cattle sell with proper health papers for interstate shipment. A rigid herd health program is followed.

**ONLINE BIDDING:**



1. Create an account at [www.dvauction.com](http://www.dvauction.com) under the 'register' tab.

2. Apply for bidding approval by clicking on the 'details' tab, at least 24 hours prior to the auction. A DV Representative will notify you once you have been approved.

3. Tune in for the sale and make your purchase!

After the sale, contact the sale manager or owner to arrange transportation and payment. High-Speed Internet is required for successful bidding. Be sure to check the lag-time monitor in the top left corner to ensure real-time broadcasts.

**Proxy Bidding:** If you can't make time to watch the sale, register a proxy bid and let our system represent your bid while you're away. Look for the 'proxy bid' tab on the auction listing and fill in your maximum bids. We'll handle the rest!

**Having trouble?** During the auction, you can type a message to the operator at any time for assistance. Our full-time support team can also always be reached at 402-474-5557.

## *Sale Representatives*

Scott Dirk..... Tri-State Livestock News .....605/380-6024

Kirby Goettsch..... Farm & Ranch Guide .....605/226-8925 or 380-3939 (cell phone)

Jill Hotchkiss..... Hereford America.....605/490-1409

Vern Frey..... Frey Livestock Sales & Service .....701/721-0344

Tony Heins..... Western Ag Reporter .....701/400-4435

Ryan Casteel..... The Cattle Business Weekly .....605/423-6000

Andrew Swanson..... American Angus Association.....507/829-4133

## *Evenson Angus*

PO Box 1089 • Hettinger, ND 58639

Rodney: 701/567-3358 • e-mail: [reenson@ndsupernet.com](mailto:reenson@ndsupernet.com)

Visit our website at: [www.evensonangus.com](http://www.evensonangus.com)

---

---

---

---

# *Additional Terms and Conditions as Provided by Evenson Angus*

## **GUARANTEE:**

Bulls have not been fertility tested but are guaranteed to pass a fertility test. We will guarantee bulls for injury through the first breeding season, which ends on September 1<sup>st</sup> in the year of purchase, on all bulls which sell for \$3,000.00 or more. If a problem occurs we will give you a suitable replacement or you will receive full credit, minus the salvage value of the original bull towards another purchase in next year's sale. Injury resulting in death of the bull will not be the responsibility of Evenson Angus Ranch. This is an insurable risk that the purchaser can obtain coverage for through various livestock insurers.

## **VOLUME DISCOUNTS ON BULLS:**

- 3% on 3 Bulls**
- 4% on 4 Bulls**
- 5% on 5 Bulls**
- 6% on 6 Bulls**
- 7% on 7 Bulls**



## **RETAINED INTEREST**

**Evenson Angus retaining  
1/3 semen interest and  
revenue sharing on all bulls selling**

## **GENETIC DEFECTS:**

All registered cattle in this sale have been tested free of the AM, NH and CA genetic defects by pedigree or DNA test.

## **LIABILITY:**

Evenson Angus does not assume any liability in case of accidents.

## **TERMS AND CONDITIONS:**

Terms of the sale are cash.

All animals will sell fully guaranteed according to the terms and conditions of the American Angus Association. Statements made sale day take precedence over printed information.

FREE DELIVERY (BULLS ONLY) UP TO 250 MILES — Elsewhere actual cost.  
\$75 discount per bull if you haul your own on sale day.

## **WINTERING:**

Wintering arrangements can be made on all bulls at \$2.50 per day. Bulls will be handled as if they were our own but are the property of the buyer immediately after the sale. We encourage you to insure your bulls against any possible losses. Bulls that are wintered by **Evenson Angus** are to be picked up at the ranch by May 15<sup>th</sup>. If you agree with our wintering program, please sign and give this slip to the clerk.

Signature \_\_\_\_\_ Date \_\_\_\_\_

---

# William "Bill" Evenson

---

*It is with heavy heart that I write this tribute to Bill Evenson.*

*I first became acquainted with Bill about 30 years ago when his then sale partner Orral Stadheim called me to see if I could help them with advertising for their sale. I enjoyed working with Bill and Orral on their sale for many years. I learned a lot and we had quite a few laughs along the way. When Orral passed away I thought that would be the end of our business relationship since Bill was an Angus breeder and I had a Hereford publication. To my surprise he stayed with me, trusting me to create and place his advertising and promote their sale. Bill was always kind and respectful and we had great conversations about cattle, cattle markets, marketing, sports, family and many other things.*

*I thoroughly enjoyed working with him and valued our conversations and friendship. I treasured working with this great cattlemen. He was one of the best. We will miss you Bill.*

*— Jill Hotchkiss  
Hereford America*



# Reference Sires



**HEIKEN BROADVIEW**



**A**

## Heiken Broadview

AMF-CAF-D2F-DDF-M1F-NHF-OHF-OSF-RDF Gen: HD50K

CONNEALY SPUR  
VERMILION SPUR E119  
VERMILION LASS 4071

SITZ LOGO 12964  
JCH BHA KAREN 7815  
JCH KAREN 5130

CONNEALY STIMULUS 8419  
JAZZA OF CONANGA 8594  
VERMILION BEAR PAW  
VERMILION LASS 6040  
SITZ TEBOW 11860  
SITZ SHAUNA 3152  
SITZ TOP SEED 539X  
J C H KAREN 7104

### Production

E P D S	Birth	Wean	Year	Yr Ht	Scr	HP	Milk	Mwt	Mht	\$Values
	Acc	Acc	Acc	Acc	Acc	Acc	Acc	Acc	Acc	
	-.2	+75	+133	+.3	+2.42	+12.4	+23	+53	+4	Wean
	.93	.91	.87	.82	.85	.56	.64	.57	.60	+72
										Feedlot
										+106

### Mgmt

### Carcass

Doc	Cwt	Mrb	RE	Fat	Grp	\$Values
Acc	Acc	Acc	Acc	Acc	Prog	
+8	+65	+1.10	+.72	+.027	105	Grid
.78	.49	.45	.46	.40	351	+74
						Beef
						+180



**KESSLERS COMMODORE 6516**



**B**

## Kesslers Commodore 6516

AMF-CAF-D2F-DDF-M1F-NHF-OHF-OSF-RDF Gen: i50K

CONNEALY CONSENSUS 7229  
CONNEALY COMRADE 1385  
HAPPY GEE OF CONANGA 919

SUMMITCREST COMPLETE 1P55  
KESSLERS RAINBOW 0595  
KESSLERS RAINBOW 3043

CONNEALY CONSENSUS  
BLUE LILLY OF CONANGA 16  
G A R NEW DESIGN 5050  
HAP GINA OF CONANGA 260 4965  
C F RIGHT DESIGN 1802  
SUMMITCREST ELBA 1M17  
H A R B CINCHA 829  
KESSLERS RAINBOW 1042

### Production

E P D S	Birth	Wean	Year	Yr Ht	Scr	HP	Milk	Mwt	Mht	\$Values
	Acc	Acc	Acc	Acc	Acc	Acc	Acc	Acc	Acc	
	-.1	+83	+143	+.6	+1.29	+10.4	+29	+74	+5	Wean
	.95	.93	.90	.88	.88	.66	.79	.58	.61	+84
										Feedlot
										+114

### Mgmt

### Carcass

Doc	Cwt	Mrb	RE	Fat	Grp	\$Values
Acc	Acc	Acc	Acc	Acc	Prog	
+28	+66	+85	+.47	+.012	150	Grid
.80	.57	.53	.53	.48	587	+60
						Beef
						+174



**FREYS QUALITY 0187**

**C**

## Freys Quality 0187

AMF-CAF-D2F-DDF-M1F-NHF-OHF-OSF-RDF Gen: Angus GS

TEF OUTSIDE 514  
KR QUALITY 8525  
KR LUCY ROSE 6587

BSAR OPPORTUNITY 9114  
F A R MISS BLACKCAP 51A  
F A R MISS BLACKCAP 75X

HA OUTSIDE 3008  
T E F JET PRINCESS 714  
MAY-WAY EQUITY  
KR LUCY ROSE 4086  
BSAR DESIGN DOCTOR 0910  
BISHOPS LASSIE 746  
M A R MIDLAND EMPIRE 3092  
F A R MISS BLACKCAP 1211

### Production

E P D S	Birth	Wean	Year	Yr Ht	Scr	HP	Milk	Mwt	Mht	\$Values
	Acc	Acc	Acc	Acc	Acc	Acc	Acc	Acc	Acc	
	+3.4	+79	+146	+1.2	+85	+16.6	+25	+109	+1.2	Wean
	.80	.76	.56	.49	.56	.25	.34	.39	.41	+60
										Feedlot
										+108

### Mgmt

### Carcass

Doc	Cwt	Mrb	RE	Fat	Grp	\$Values
Acc	Acc	Acc	Acc	Acc	Prog	
+22	+61	+.45	+.46	+.030	5	Grid
.40	.44	.39	.39	.35	24	+40
						Beef
						+148

# Reference Sires

**D**

## Evenson Southern Charm 086

AMF-CAF-D2F-DDF-M1F-NHF-OHF-OSF-RDF Gen: HD50K

SILVEIRAS CONVERSION 8064  
BUBS SOUTHERN CHARM AA31  
HICKORY HILL ERICA 009

BT CROSSOVER 758N  
EXG SARAS DREAM S609 R3  
CONNEALY STIMULUS 8419  
HICKORY HILL ERICA TA32  
A A R TEN X 7008 S A  
EVENSON BLACKBIRD 1180  
SITZ UPWARD 307R  
EVENSON QUEEN 9284

EVENSON STETSON 100X  
EVENSON QUEEN 693  
EVENSON QUEEN 292

### Production

E P D S	Birth	Wean	Year	Yr Ht	Scr	HP	Milk	Mwt	Mht	\$Values
	Acc	Acc	Acc	Acc	Acc	Acc	Acc	Acc	Acc	
	+3.9	+85	+141	+9	+1.48	+15.4	+24	+68	+8	Wean
	.76	.71	.51	.51	.52	.25	.35	.41	.43	+72
<b>Feedlot</b>										
+105										
<b>Grid</b>										
+83										
<b>Beef</b>										
+187										

Mgmnt			Carcass			
Doc	Cwt	Mrb	RE	Fat	Grp	Prog
Acc	Acc	Acc	Acc	Acc	Acc	
+24	+67	+1.05	+1.05	-.035	6	
.35	.49	.43	.43	.42	37	



EVENSON SOUTHERN CHARM 086



K C F BENNETT SUMMATION



**E**

## K C F Bennett Summation

AMF-CAF-D2F-DDF-M1F-NHF-OHF-OSF-RDF Gen: Angus GS

CONNEALY CONSENSUS  
K C F BENNETT CONSENT Y75  
K C F MISS PROTEGE W148

KMK ALLIANCE 6595 187  
BLINDA OF CONANGA 004  
GAR-EGL PROTEGE  
BREELA OF CONANGA 3991  
S S TRAVELER 6807 T510  
S S MISS RITA R011 7R8  
G A R PREDESTINED  
THOMAS PATRICIA 2626

S S OBJECTIVE T510 0T26  
THOMAS PATRICIA 9705  
THOMAS PATRICIA 71138

### Production

E P D S	Birth	Wean	Year	Yr Ht	Scr	HP	Milk	Mwt	Mht	\$Values
	Acc	Acc	Acc	Acc	Acc	Acc	Acc	Acc	Acc	
	+4	+92	+171	+4	+93	+11.8	+36	+105	+4	Wean
	.93	.90	.84	.86	.84	.58	.68	.64	.71	+101
<b>Feedlot</b>										
+136										
<b>Grid</b>										
+59										
<b>Beef</b>										
+194										

Mgmnt			Carcass			
Doc	Cwt	Mrb	RE	Fat	Grp	Prog
Acc	Acc	Acc	Acc	Acc	Acc	
+22	+84	+67	+1.27	+.049	186	
.77	.59	.54	.55	.50	360	

**F**

## Evenson Everest 964

AMF-CAF-D2F-DDF-M1F-NHF-OHF-OSF-RDF Gen: Angus GS

CONNEALY COMRADE 1385  
KESSLERS COMMODORE 6516  
KESSLERS RAINBOW 0595

CONNEALY CONSENSUS 7229  
HAPPY GEE OF CONANGA 919  
SUMMITCREST COMPLETE 1P55  
KESSLERS RAINBOW 3043  
H A IMAGE MAKER 0415  
MYTTYS RITA R206  
J D TOP HONORS R543  
EVENSON BLACKBIRD 4271

TW ELA IMAGE MAKER 406X  
EVENSON BLACKBIRD 244  
EVENSON BLACKBIRD 0118

### Production

E P D S	Birth	Wean	Year	Yr Ht	Scr	HP	Milk	Mwt	Mht	\$Values
	Acc	Acc	Acc	Acc	Acc	Acc	Acc	Acc	Acc	
	+1.3	+72	+132	+7	+1.11	+12.5	+32	+65	+3	Wean
	.84	.78	.68	.62	.68	.25	.46	.43	.44	+72
<b>Feedlot</b>										
+114										
<b>Grid</b>										
+50										
<b>Beef</b>										
+164										

Mgmnt			Carcass			
Doc	Cwt	Mrb	RE	Fat	Grp	Prog
Acc	Acc	Acc	Acc	Acc	Acc	
+20	+59	+56	+68	-.007	4	
.35	.48	.41	.42	.38	27	



EVENSON EVEREST 964



# Reference Sires



## Evenson Commodore 0160

AMF-CAF-D2F-DDF-M1F-NHF-OHF-OSF-RDF Gen: Angus GS

CONNEALY COMRADE 1385  
KESSLERS COMMODORE 6516  
KESSLERS RAINBOW 0595

CONNEALY BLACK GRANITE  
EVENSON ANN 685  
EVENSON ANN 0169

CONNEALY CONSENSUS 7229  
HAPPY GEE OF CONANGA 919  
SUMMITCREST COMPLETE 1P55  
KESSLERS RAINBOW 3043  
CONNEALY CONSENSUS 7229  
EURA ELGA OF CONANGA 9109  
SITZ UPWARD 307R  
EVENSON ANN 7241

### Production

E P D S	Birth	Wean	Year	Yr Ht	Scr	HP	Milk	Mwt	Mht	\$Values
	Acc	Acc	Acc	Acc	Acc	Acc	Acc	Acc	Acc	
	+7	+93	+152	+1.1	+1.05	+12.8	+32	+69	+7	Wean +98
	.74	.68	.58	.52	.60	.28	.39	.43	.46	
<b>Feedlot</b>										
+125										
<b>Grid</b>										
+53										
<b>Beef</b>										
+177										

Mgmt			Carcass				Grid
Doc	Cwt	Mrb	RE	Fat	Grp		
Acc	Acc	Acc	Acc	Acc	Prog		
+30	+81	+63	+68	+0.08	4		
.38	.47	.42	.42	.39	14		



## Evenson Comrade 9129

Gen: Angus GS

CONNEALY COMRADE 1385  
KESSLERS COMMODORE 6516  
KESSLERS RAINBOW 0595

CONNEALY FINAL PRODUCT  
EVENSON QUEEN 182  
EVENSON QUEEN 3321

CONNEALY CONSENSUS 7229  
HAPPY GEE OF CONANGA 919  
SUMMITCREST COMPLETE 1P55  
KESSLERS RAINBOW 3043  
CONNEALY PRODUCT 568  
EBONISTA OF CONANGA 471  
H A R B CINCHA 829  
EVENSON QUEEN 943

### Production

E P D S	Birth	Wean	Year	Yr Ht	Scr	HP	Milk	Mwt	Mht	\$Values
	Acc	Acc	Acc	Acc	Acc	Acc	Acc	Acc	Acc	
	+2.4	+81	+142	+1.0	+1.30	+8.9	+24	+87	+8	Wean +70
	.71	.66	.49	.49	.52	.24	.34	.39	.40	
<b>Feedlot</b>										
+108										
<b>Grid</b>										
+56										
<b>Beef</b>										
+164										



## Hoffman Thedford

AMF-CAF-D2F-DDF-M1F-NHF-OHF-OSF-RDF Gen: Angus GS

CONNEALY BLACK GRANITE  
BAR R JET BLACK 5063  
BAR R IRIS ANITA 0113

KG SOLUTION 0018  
HA RITO LADY 3839  
HA RITO LADY 0622

CONNEALY CONSENSUS 7229  
EURA ELGA OF CONANGA 9109  
SITZ UPWARD 307R  
BAR R ANITA 7081  
MOGCK SURE SHOT  
KG RITO LADY 8724  
HA PROGRAM 5652  
HA RITO LADY 8395

### Production

E P D S	Birth	Wean	Year	Yr Ht	Scr	HP	Milk	Mwt	Mht	\$Values
	Acc	Acc	Acc	Acc	Acc	Acc	Acc	Acc	Acc	
	+5	+78	+143	+7	+2.28	+16.3	+34	+59	+8	Wean +80
	.95	.93	.89	.87	.88	.59	.46	.47	.48	
<b>Feedlot</b>										
+130										
<b>Grid</b>										
+51										
<b>Beef</b>										
+181										



## V A R Conclusion 0234

AMF-CAF-D2F-DDF-M1F-NHF-OHF-OSF-RDF Gen: HD50K

K C F BENNETT CONSENT Y75  
K C F BENNETT SUMMATION  
THOMAS PATRICIA 9705

CONNEALY ONWARD  
SANDPOINT BLACKBIRD 8809  
RIVERBEND BLACKBIRD 4301



CONNEALY CONSENSUS  
K C F MISS PROTEGE W148  
S S OBJECTIVE T510 OT26  
THOMAS PATRICIA 71138  
CONNEALY LEAD ON  
ALTUNE OF CONANGA 6104  
G A R GRID MAKER  
RIVERBEND BLACKBIRD 2204

### Production

E P D S	Birth	Wean	Year	Yr Ht	Scr	HP	Milk	Mwt	Mht	\$Values
	Acc	Acc	Acc	Acc	Acc	Acc	Acc	Acc	Acc	
	+5	+95	+173	+7	+8.9	+8.8	+26	+130	+8	Wean +82
	.90	.87	.83	.82	.82	.39	.40	.49	.51	
<b>Feedlot</b>										
+125										
<b>Grid</b>										
+65										
<b>Beef</b>										
+190										

Mgmt			Carcass				Grid
Doc	Cwt	Mrb	RE	Fat	Grp		
Acc	Acc	Acc	Acc	Acc	Prog		
+32	+80	+83	+1.04	+0.27	158		
.58	.55	.50	.51	.46	330		

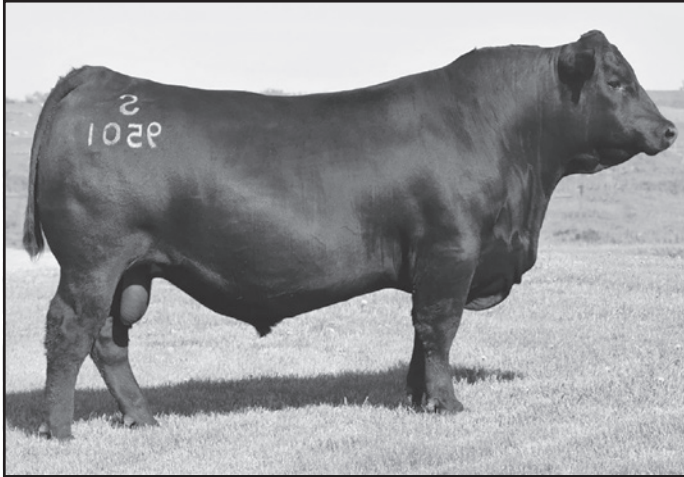


HOFFMAN THEDFORD



V A R CONCLUSION 0234

# Reference Sires



**S ARCHITECT 9501**



## S Architect 9501

AMF-CAF-D2F-DDF-M1F-NHF-OHF-OSF-RDF Gen: Angus GS

KM BROKEN BOW 002  
SYDGEN BLUEPRINT  
SITZ FLORABELLE FANNY 4735

SUMMITCREST COMPLETE 1P55  
SUMMITCREST PRINCESS OP12  
SITZ INVESTMENT 660Z  
SITZ FLORABELLE FANNY 2683  
S CHISUM 6175  
S PRIDE ANNA 709  
CONNEALY COURAGE 25L  
S BLOSSOM 374

Production											
E	Birth	Wean	Year	Yr Ht	Scr	HP	Milk	Mwt	Mht	\$Values	
P	Acc	Acc	Acc	Acc	Acc	Acc	Acc	Acc	Acc		Wean
D	+3	+92	+152	+4	+1.63	+18.4	+21	+69	+4	Feedlot	
s	.93	.91	.83	.83	.82	.58	.45	.45	.45	+110	
Mgmt							Carcass			Grid	
Doc	Cwt	Mrb	RE	Fat	Grp	Prog	Acc	Acc	Acc		Wean
	+27	+74	+51	+74	+029	48	.84	.51	.45	.46	+46
											Beef
											+156



## Quaker Hill Black Bandolier

AMF-CAF-D2F-DDF-M1F-NHF-OHF-OSF-RDF Gen: Angus GS

CHERRY CREEK LAND GRANT  
CONNEALY CLARITY  
BRESHIE OF CONANGA 6988



K C F BENNETT HOMESTEAD  
CHERRY CRK EVA B27 M  
CONNEALY CONFIDENCE PLUS  
BRELLY OF CONANGA 367  
G A R EARLY BIRD  
CHAIR ROCK AMBUSH 1018  
QUAKER HILL RAMPAGE 0A36  
S A V BLACKCAP MAY 1426

G A R ASHLAND  
QUAKER HILL BLACKCAPMAY 9A27  
QUAKER HILL BLACKCAPMAY 7R81

Production											
E	Birth	Wean	Year	Yr Ht	Scr	HP	Milk	Mwt	Mht	\$Values	
P	Acc	Acc	Acc	Acc	Acc	Acc	Acc	Acc	Acc		Wean
D	-8	+101	+182	+1.0	+1.48	+15.9	+29	+127	+1.1	Feedlot	
s	.82	.67	.41	.52	.45	.25	.32	.38	.39	+149	
Mgmt							Carcass			Grid	
Doc	Cwt	Mrb	RE	Fat	Grp	Prog	Acc	Acc	Acc		Wean
	+22	+94	+1.18	+1.07	-013	2	.34	.43	.37	.37	+85
											Beef
											+234



**QUAKER HILL BLACK BANDOLIER**



## Deep Creek Square Deal

AMF-CAF-D2F-DDF-M1F-NHF-OHF-OSF-RDF Gen: Angus GS

WOODHILL BLUEPRINT  
MYERS FAIR-N-SQUARE M39  
MYERS MISS BEAUTY M136



CONNEALY CONFIDENCE PLUS  
WOODHILL EVERGREEN Z291-B233  
CONNEALY THUNDER  
MYERS MISS BEAUTY M476  
PRAIRIE PRIDE NEXT STEP 2036  
BASIN CHARISMA U691  
K C F BENNETT TOTAL  
DEEP CREEK 193 LASS 516

RBM STEP AHEAD C80  
DEEP CREEK STEP LASS 064  
DEEP CREEK TOTAL LASS 701

Production											
E	Birth	Wean	Year	Yr Ht	Scr	HP	Milk	Mwt	Mht	\$Values	
P	Acc	Acc	Acc	Acc	Acc	Acc	Acc	Acc	Acc		Wean
D	+9	+84	+143	+9	+1.39	+16.1	+31	+70	+7	Feedlot	
s	.78	.73	.48	.50	.45	.25	.35	.42	.42	+109	
Mgmt							Carcass			Grid	
Doc	Cwt	Mrb	RE	Fat	Grp	Prog	Acc	Acc	Acc		Wean
	+23	+66	+93	+84	+044	5	.36	.45	.40	.40	+86
											Beef
											+175



**DEEP CREEK SQUARE DEAL**

# Reference Sires



## Ridl Appearance 707

M1F

Gen: GGPLD

YOUNG DALE XCALIBER 32X  
FREYS APPEARANCE  
F A R MISSIE 62Y

S A HIGH DEFINITION 560  
BLACKBIRD 1434 BAF  
BALDRIDGE BLACKBIRD 1892 BAF

YOUNG DALE KNOCK OUT 134U  
BROOKMORE TIBBIE 222T  
S A V BISMARCK 5682  
F A R MISSIE 48W  
H A IMAGE MAKER 0415  
S A QUEEN EVA 178  
STYLES CC LINEUP L3  
BALDRIDGE BLACKBIRD 90 BAF

### Production

E P D s	Birth Acc	Wean Acc	Year Acc	Yr Ht Acc	Scr Acc	HP Acc	Milk Acc	Mwt Acc	Mht Acc	\$Values
	+1.2	+57	+108	+7	+2.68	+12.5	+33	+47	+2	Wean +59
	.79	.75	.60	.53	.58	.22	.46	.40	.42	Feedlot +93
Mgmt		Carcass				Grp				
	Doc Acc	Cwt Acc	Mrb Acc	RE Acc	Fat Acc	Grp Prog				Grid +15
	+25	+42	-.05	+.46	+.045	6				Beef +108
	.34	.45	.39	.39	.35	19				



## VAR Done Deal 2188

Gen: Angus GS

HOOVER NO DOUBT  
BALDRIDGE DONE DEAL  
BALDRIDGE ISABEL B061

G A R ASHLAND  
VAR MAGIC BLACKBIRD 966  
VAR MAGIC BLACKBIRD 7451

MOGCK BULLSEYE  
MISS BLACKCAP ELLSTON J2  
G A R PROPHET  
BALDRIDGE ISABEL Y69  
G A R EARLY BIRD  
CHAIR ROCK AMBUSH 1018  
BROOKING COMMOTION 4068  
VAR MAGIC PRIMROSE 315

### Production

E P D s	Birth Acc	Wean Acc	Year Acc	Yr Ht Acc	Scr Acc	HP Acc	Milk Acc	Mwt Acc	Mht Acc	\$Values
	+1.2	+82	+145	+6	+85	+9.9	+28	+79	+6	Wean +81
	.62	.54	.37	.46	.38	.26	.34	.37	.40	Feedlot +104
Mgmt		Carcass				Grp				
	Doc Acc	Cwt Acc	Mrb Acc	RE Acc	Fat Acc	Grp Prog				Grid +56
	+24	+69	+.62	+1.07	+.013					Beef +160
	.34	.40	.35	.34	.32					



# Long Yearling Bulls



## EVENSON COMMODORE 3401

Tattoo: 3401 OHF DOB: 8/07/23 Reg. # 21000214

SIRE: KESSLERS COMMODORE 6516  
EVENSON COMMODORE 0160  
EVENSON ANN 685

DAM: EVENSON BLACK GRANITE 837  
EVENSON MARY 1478  
EVENSON MARY 9474

\$ Values	
Feed	+97
Grid	+37
Beef	+134

BW	Adj. WW	Wt. 2-8-25	Act. Scrotal
80	573	1605	41

EPDs	
CED	+7
Birth	+8
Wean	+78
Year	+134
HP	+10.8
Milk	+37
Doc.	+22
Ultrasound EPDs	
CW	+60
Marb.	+.28
REA	+.59
Genomic	
Tend	14%



## EVENSON SUMMATION 3414

Tattoo: 3414 OHF DOB: 8/14/23 Reg. # \*21012728

SIRE: K C F BENNETT CONSENT Y75  
THOMAS PATRICIA 9705

DAM: EVENSON EVEREST 964  
EVENSON BLACKBIRD 1414  
EVENSON BLACKBIRD 9491

\$ Values	
Feed	+112
Grid	+63
Beef	+175

BW	Adj. WW	Wt. 2-8-25	Act. Scrotal
70	662	1675	38

EPDs	
CED	+7
Birth	+2
Wean	+80
Year	+147
HP	+12.0
Milk	+40
Doc.	+20
Ultrasound EPDs	
CW	+74
Marb.	+.78
REA	+.94
Genomic	
Tend	



## EVENSON ARCHITECT 3416

Tattoo: 3416 M1F-OHF DOB: 8/14/23 Reg. # 21013798

SIRE: SYDGEN BLUEPRINT  
S ARCHITECT 9501  
S BLOSSOM 7514

DAM: RIDL APPEARANCE 707  
EVENSON ELBA 1527  
EVENSON ELBA 7511

\$ Values	
Feed	+97
Grid	+51
Beef	+148

BW	Adj. WW	Wt. 2-8-25	Act. Scrotal
72	679	1660	45

EPDs	
CED	+12
Birth	-.7
Wean	+79
Year	+133
HP	+15.2
Milk	+33
Doc.	+33
Ultrasound EPDs	
CW	+64
Marb.	+.62
REA	+.69
Genomic	
Tend	



## EVENSON SUMMATION 3418

Tattoo: 3418 M1F-OHF DOB: 8/15/23 Reg. # \*21012726

SIRE: K C F BENNETT CONSENT Y75  
THOMAS PATRICIA 9705

DAM: EVENSON BLACK GRANITE 837  
EVENSON MARY 1477  
EVENSON MARY 9474

\$ Values	
Feed	+130
Grid	+60
Beef	+189

BW	Adj. WW	Wt. 2-8-25	Act. Scrotal
80	672	1685	40

EPDs	
CED	+8
Birth	+7
Wean	+80
Year	+150
HP	+11.7
Milk	+39
Doc.	+23
Ultrasound EPDs	
CW	+76
Marb.	+.81
REA	+.87
Genomic	
Tend	



### EVENSON QUALITY 3425

Tattoo: 3425 OHP-M1F DOB: 8/18/23 Reg. # \*21000224

**SIRE:** FREYS QUALITY 8525  
FREYS QUALITY 0187  
F A R MISS BLACKCAP 51A

**DAM:** EVENSON QUEEN 0478  
EVENSON QUEEN 5404

\$ Values	
Feed	+119
Grid	+50
Beef	+168

EPDs	
CED	-7
Birth	+5.0
Wean	+80
Year	+147
HP	+14.5
Milk	+17
Doc.	+22
Ultrasound EPDs	
CW	+66
Marb.	+64
REA	+57

BW	Adj. WW	Wt. 2-8-25	Act. Scrotal
92	632	1625	43

Genomic	
Tend	



### EVENSON STUNNER 3426

Tattoo: 3426 M1F DOB: 8/19/23 Reg. # \*21000225

**SIRE:** DUPPONG STUNNER 1182  
WC BLACKBIRD 9167

**DAM:** EVENSON DAISY 1425  
EVENSON DAISY 9506

\$ Values	
Feed	+119
Grid	+45
Beef	+164

EPDs	
CED	+1
Birth	+1.4
Wean	+94
Year	+161
HP	+12.0
Milk	+28
Doc.	+20
Ultrasound EPDs	
CW	+81
Marb.	+59
REA	+28

BW	Adj. WW	Wt. 2-8-25	Act. Scrotal
82	659	1460	43

Genomic	
Tend	



### EVENSON APPEARANCE 3435

Tattoo: 3435 M1F DOB: 8/23/23 Reg. # \*21000231

**SIRE:** RIDL APPEARANCE 707  
BLACKBIRD 1434 BAF

**DAM:** EVENSON QUEEN DOLLY 0472  
EVENSON QUEEN DOLLY 4583

\$ Values	
Feed	+78
Grid	+27
Beef	+105

EPDs	
CED	+8
Birth	+1.0
Wean	+63
Year	+111
HP	+15.4
Milk	+30
Doc.	+36
Ultrasound EPDs	
CW	+36
Marb.	+32
REA	+04

BW	Adj. WW	Wt. 2-8-25	Act. Scrotal
84	655	1580	41

Genomic	
Tend	



### EVENSON APPEARANCE 3438

Tattoo: 3438 M1F DOB: 8/24/23 Reg. # \*21000232

**SIRE:** RIDL APPEARANCE 707  
BLACKBIRD 1434 BAF

**DAM:** EVENSON BLACKBIRD 0512  
EVENSON BLACKBIRD 7441

\$ Values	
Feed	+89
Grid	+33
Beef	+121

EPDs	
CED	+3
Birth	+1.5
Wean	+71
Year	+136
HP	+9.0
Milk	+37
Doc.	+13
Ultrasound EPDs	
CW	+51
Marb.	+27
REA	+48

BW	Adj. WW	Wt. 2-8-25	Act. Scrotal
82	593	1735	42

Genomic	
Tend	8%



### EVENSON QUALITY 3441

Tattoo: 3441 OHF DOB: 8/25/23 Reg. # \*21000234

**SIRE:** FREYS QUALITY 8525  
FREYS QUALITY 0187  
F A R MISS BLACKCAP 51A

**DAM:** EVENSON QUEEN 0434  
EVENSON QUEEN 8497

\$ Values	
Feed	+95
Grid	+41
Beef	+136

EPDs	
CED	+1
Birth	+4.8
Wean	+73
Year	+130
HP	+14.8
Milk	+25
Doc.	+9
Ultrasound EPDs	
CW	+52
Marb.	+36
REA	+52

BW	Adj. WW	Wt. 2-8-25	Act. Scrotal
96	684	1750	37

Genomic	
Tend	7%



### EVENSON SOUTHERN CHARM 3444

Tattoo: 3444 DDF-OHF DOB: 8/26/23 Reg. # 21000237

**SIRE:** EVENSON SOUTHERN CHARM 086  
EVENSON QUEEN 693

**DAM:** EVENSON ANSWER 222  
EVENSON BLACKBIRD 6513  
EVENSON BLACKBIRD 2510



\$ Values	
Feed	+98
Grid	+58
Beef	+156

EPDs	
CED	+8
Birth	+1.0
Wean	+76
Year	+136
HP	+15.7
Milk	+26
Doc.	+15
Ultrasound EPDs	
CW	+57
Marb.	+72
REA	+81

BW	Adj. WW	Wt. 2-8-25	Act. Scrotal
74	629	1650	40

Genomic	
Tend	



### EVENSON SUMMATION 3449

Tattoo: 3449 OHF DOB: 8/28/23 Reg. # 21012814

**SIRE:** K C F BENNETT SUMMATION  
K C F BENNETT CONSENT Y75  
THOMAS PATRICIA 9705

**DAM:** EVENSON QUEEN 7444  
EVENSON QUEEN 3529

\$ Values	
Feed	+110
Grid	+37
Beef	+147

EPDs	
CED	+11
Birth	+5
Wean	+78
Year	+132
HP	+11.3
Milk	+26
Doc.	+28
Ultrasound EPDs	
CW	+63
Marb.	+29
REA	+94

BW	Adj. WW	Wt. 2-8-25	Act. Scrotal
80	689	1620	41

Genomic	
Tend	



# EVENSON ARCHITECT 3450

Tattoo: 3450 OHF DOB: 8/28/23 Reg. # 21013815

SIRE: SYDGEN BLUEPRINT  
S ARCHITECT 9501  
S BLOSSOM 7514

DAM: BRUNS TOP CUT 373  
EVENSON BLACKBIRD 6439  
EVENSON BLACKBIRD 4579



\$ Values	
Feed	+97
Grid	+60
Beef	+157

EPDs	
CED	+6
Birth	+1.4
Wean	+83
Year	+143
HP	+16.7
Milk	+31
Doc.	+27
Ultrasound EPDs	
CW	+63
Marb.	+74
REA	+72
Genomic	
Tend	

BW	Adj. WW	Wt. 2-8-25	Act. Scrotal
82	673	1730	40



# EVENSON SUMMATION 3451

Tattoo: 3451 OHF DOB: 8/28/23 Reg. # \*21012799

SIRE: K C F BENNETT CONSENT Y75  
K C F BENNETT SUMMATION  
THOMAS PATRICIA 9705

DAM: RIDL APPEARANCE 707  
EVENSON MARY 9451  
EVENSON MARY 7427

\$ Values	
Feed	+109
Grid	+45
Beef	+154

EPDs	
CED	+4
Birth	+3.7
Wean	+88
Year	+156
HP	+12.3
Milk	+34
Doc.	+26
Ultrasound EPDs	
CW	+71
Marb.	+44
REA	+83
Genomic	
Tend	

BW	Adj. WW	Wt. 2-8-25	Act. Scrotal
658		1700	41



# EVENSON ARCHITECT 3453

Tattoo: 3453 OHF DOB: 8/28/23 Reg. # \*21013802

SIRE: SYDGEN BLUEPRINT  
S ARCHITECT 9501  
S BLOSSOM 7514

DAM: JINDRA KINETIC  
EVENSON DAISY 9506  
EVENSON DAISY 3570

\$ Values	
Feed	+124
Grid	+41
Beef	+165

EPDs	
CED	+1
Birth	+3.1
Wean	+91
Year	+163
HP	+16.5
Milk	+30
Doc.	+35
Ultrasound EPDs	
CW	+79
Marb.	+30
REA	+85
Genomic	
Tend	

BW	Adj. WW	Wt. 2-8-25	Act. Scrotal
80	729	1780	37



# EVENSON QUALITY 3454

Tattoo: 3454 OHF DOB: 8/29/23 Reg. # \*21000242

SIRE: KR QUALITY 8525  
FREYS QUALITY 0187  
F A R MISS BLACKCAP 51A

DAM: EVENSON STETSON 100X 730  
EVENSON MARY 0444  
EVENSON MARY 7427



\$ Values	
Feed	+77
Grid	+56
Beef	+132

EPDs	
CED	+4
Birth	+2.4
Wean	+79
Year	+131
HP	+16.2
Milk	+21
Doc.	+27
Ultrasound EPDs	
CW	+45
Marb.	+80
REA	+41
Genomic	
Tend	5%

BW	Adj. WW	Wt. 2-8-25	Act. Scrotal
82	766	1730	41





# EVENSON APPEARANCE 3457

Tattoo: 3457 OHF DOB: 8/29/23 Reg. # \*21000244

**SIRE:** FREYS APPEARANCE  
RIDL APPEARANCE 707  
BLACKBIRD 1434 BAF

**DAM:** BALDRIDGE 38 SPECIAL  
EVENSON QUEEN DOLLY 0425  
EVENSON QUEEN DOLLY 8434

\$ Values	
Feed	+111
Grid	+41
Beef	+152

EPDs	
CED	-4
Birth	+3.8
Wean	+80
Year	+132
HP	+12.2
Milk	+30
Doc.	+24
Ultrasound EPDs	
CW	+66
Marb.	+49
REA	+56

BW	Adj. WW	Wt. 2-8-25	Act. Scrotal
84	707	1680	42

Genomic	
Tend	



# EVENSON STUNNER 3458

Tattoo: 3458 OHF DOB: 8/29/23 Reg. # \*21000245

**SIRE:** MUSGRAVE 316 STUNNER  
DUPPING STUNNER 1182  
WC BLACKBIRD 9167

**DAM:** LT REVERED  
EVENSON DAISY 1432  
EVENSON DAISY 7447

\$ Values	
Feed	+117
Grid	+42
Beef	+159

EPDs	
CED	+6
Birth	+9
Wean	+88
Year	+147
HP	+11.8
Milk	+31
Doc.	+24
Ultrasound EPDs	
CW	+74
Marb.	+57
REA	+48

BW	Adj. WW	Wt. 2-8-25	Act. Scrotal
76	743	1615	41

Genomic	
Tend	



# EVENSON SOUTHERN CHARM 3459

Tattoo: 3459 OHF DOB: 8/30/23 Reg. # \*21000246

**SIRE:** BUBS SOUTHERN CHARM AA31  
EVENSON SOUTHERN CHARM 086  
EVENSON QUEEN 693

**DAM:** JINDRA ACCLAIM  
EVENSON QUEEN 9424  
EVENSON QUEEN 7443

\$ Values	
Feed	+113
Grid	+45
Beef	+158

EPDs	
CED	+1
Birth	+3.7
Wean	+89
Year	+140
HP	+12.0
Milk	+35
Doc.	+27
Ultrasound EPDs	
CW	+76
Marb.	+42
REA	+83

BW	Adj. WW	Wt. 2-8-25	Act. Scrotal
86	782	1770	39

Genomic	
Tend	



# EVENSON QUALITY 3460

Tattoo: 3460 OHF DOB: 8/30/23 Reg. # \*21000247

**SIRE:** KR QUALITY 8525  
FREYS QUALITY 0187  
F A R MISS BLACKCAP 51A

**DAM:** HA PRIME CUT 4493  
EVENSON MARY 9474  
EVENSON MARY 4510

\$ Values	
Feed	+102
Grid	+45
Beef	+148

EPDs	
CED	+6
Birth	+1.5
Wean	+68
Year	+119
HP	+13.4
Milk	+29
Doc.	+29
Ultrasound EPDs	
CW	+53
Marb.	+56
REA	+42

BW	Adj. WW	Wt. 2-8-25	Act. Scrotal
82	637	1730	40

Genomic	
Tend	8%



# EVENSON QUALITY 3461

Tattoo: 3461 DOB: 8/30/23 Reg. # \*21000248

**SIRE:** KR QUALITY 8525  
FREYS QUALITY 0187  
F A R MISS BLACKCAP 51A

**DAM:** HA PRIME CUT 4493  
EVENSON IDA 9440  
EVENSON IDA 6454

\$ Values	
Feed	+102
Grid	+30
Beef	+133

EPDs	
CED	+1
Birth	+2.6
Wean	+79
Year	+142
HP	+11.7
Milk	+24
Doc.	+27
Ultrasound EPDs	
CW	+59
Marb.	+31
REA	+39

BW	Adj. WW	Wt. 2-8-25	Act. Scrotal
94	745	1805	40

Genomic	
Tend	8%





# EVENSON QUALITY 3462

Tattoo: 3462    DOB: 8/30/23    Reg. # \*21000249

**SIRE:** KR QUALITY 8525  
FREYS QUALITY 0187  
F A R MISS BLACKCAP 51A

**DAM:** HA PRIME CUT 4493  
EVENSON ELBA 9439  
EVENSON ELBA 6479



\$ Values	
Feed	+87
Grid	+56
Beef	+143

EPDs	
CED	+3
Birth	+2.1
Wean	+61
Year	+109
HP	+10.4
Milk	+26
Doc.	+25
Ultrasound EPDs	
CW	+38
Marb.	+82
REA	+32

BW	Adj. WW	Wt. 2-8-25	Act. Scrotal
84	676	1575	39

Genomic	
Tend	



# EVENSON APPEARANCE 3475

Tattoo: 3475    DOB: 9/01/23    Reg. # \*21000256

**SIRE:** FREYS APPEARANCE  
RIDL APPEARANCE 707  
BLACKBIRD 1434 BAF

**DAM:** BT INCREDIBLE 0368  
EVENSON LADY 0442  
EVENSON LADY 7494

\$ Values	
Feed	+76
Grid	+32
Beef	+108

BW	Adj. WW	Wt. 2-8-25	Act. Scrotal
74	592	1540	42

EPDs	
CED	+15
Birth	-2.4
Wean	+58
Year	+103
HP	+13.9
Milk	+41
Doc.	+29
Ultrasound EPDs	
CW	+38
Marb.	+51
REA	+11

Genomic	
Tend	



# EVENSON ARCHITECT 3477

Tattoo: 3477    M1F    DOB: 9/01/23    Reg. # 21013817

**SIRE:** SYDGEN BLUEPRINT  
S ARCHITECT 9501  
S BLOSSOM 7514

**DAM:** CONNEALY GUINNESS  
EVENSON QUEEN 6461  
EVENSON QUEEN 9142

\$ Values	
Feed	+91
Grid	+44
Beef	+136

EPDs	
CED	+9
Birth	+2
Wean	+69
Year	+109
HP	+14.9
Milk	+32
Doc.	+19
Ultrasound EPDs	
CW	+54
Marb.	+56
REA	+45

BW	Adj. WW	Wt. 2-8-25	Act. Scrotal
82	702	1605	42

Genomic	
Tend	



# EVENSON SUMMATION 3479

Tattoo: 3479    M1F    DOB: 9/02/23    Reg. # \*21012802

**SIRE:** K C F BENNETT CONSENT Y75  
K C F BENNETT SUMMATION  
THOMAS PATRICIA 9705

**DAM:** JINDRA KINETIC  
EVENSON QUEEN 8524  
EVENSON QUEEN 2522

\$ Values	
Feed	+96
Grid	+53
Beef	+149

BW	Adj. WW	Wt. 2-8-25	Act. Scrotal
80	704	1775	40

EPDs	
CED	+10
Birth	-.2
Wean	+75
Year	+134
HP	+12.7
Milk	+37
Doc.	+25
Ultrasound EPDs	
CW	+58
Marb.	+60
REA	+81

Genomic	
Tend	



# EVENSON SOUTHERN CHARM 3480

Tattoo: 3480    OHF    DOB: 9/02/23    Reg. # \*21000257

**SIRE:** BUBS SOUTHERN CHARM AA31  
EVENSON SOUTHERN CHARM 086  
EVENSON QUEEN 693

**DAM:** EVENSON STETSON 100X 730  
EVENSON BLACKBIRD 9491  
EVENSON BLACKBIRD 2574

\$ Values	
Feed	+95
Grid	+58
Beef	+153

EPDs	
CED	+8
Birth	+1.1
Wean	+70
Year	+124
HP	+13.5
Milk	+22
Doc.	+18
Ultrasound EPDs	
CW	+56
Marb.	+60
REA	+1.16

BW	Adj. WW	Wt. 2-8-25	Act. Scrotal
76	617	1605	38

Genomic	
Tend	



# EVENSON ARCHITECT 3485

Tattoo: 3485    OHF    DOB: 9/02/23    Reg. # 21013818

**SIRE:** SYDGEN BLUEPRINT  
S ARCHITECT 9501  
S BLOSSOM 7514

**DAM:** CONNEALY GUINNESS  
EVENSON MARY 6427  
EVENSON MARY 4510

\$ Values	
Feed	+94
Grid	+44
Beef	+138

EPDs	
CED	+6
Birth	+1.3
Wean	+77
Year	+134
HP	+18.4
Milk	+29
Doc.	+18
Ultrasound EPDs	
CW	+56
Marb.	+64
REA	+23

BW	Adj. WW	Wt. 2-8-25	Act. Scrotal
92	615	1610	41

Genomic	
Tend	



# EVENSON ARCHITECT 3489

Tattoo: 3489    OHF    DOB: 9/04/23    Reg. # \*21013805

**SIRE:** SYDGEN BLUEPRINT  
S ARCHITECT 9501  
S BLOSSOM 7514

**DAM:** JINDRA KINETIC  
EVENSON QUEEN 8497  
EVENSON QUEEN 2531



\$ Values	
Feed	+110
Grid	+59
Beef	+169

BW	Adj. WW	Wt. 2-8-25	Act. Scrotal
82	649	1500	39

EPDs	
CED	+6
Birth	+1.1
Wean	+63
Year	+113
HP	+19.1
Milk	+23
Doc.	+23
Ultrasound EPDs	
CW	+58
Marb.	+83
REA	+52

Genomic	
Tend	15%



# EVENSON ARCHITECT 3491

Tattoo: 3491 OHF DOB: 9/04/23 Reg. # 21013816

SYDGEN BLUEPRINT

SIRE: S ARCHITECT 9501  
S BLOSSOM 7514

JINDRA ACCLAIM

DAM: EVENSON ELBA 6476  
EVENSON ELBA 0214



\$ Values	
Feed	+121
Grid	+61
Beef	+182

EPDs	
CED	+8
Birth	+1.7
Wean	+93
Year	+156
HP	+15.0
Milk	+24
Doc.	+30
Ultrasound EPDs	
CW	+82
Marb.	+76
REA	+95
Genomic	
Tend	

BW	Adj. WW	Wt. 2-8-25	Act. Scrotal
82	704	1720	39



# EVENSON ARCHITECT 3492

Tattoo: 3492 OHF DOB: 9/04/23 Reg. # \*21013809

SYDGEN BLUEPRINT

SIRE: S ARCHITECT 9501  
S BLOSSOM 7514

EVENSON TOP CUT 5408

DAM: EVENSON TOP CUT 8486  
EVENSON BLACKBIRD 6416

\$ Values	
Feed	+120
Grid	+29
Beef	+150

EPDs	
CED	+9
Birth	+6
Wean	+79
Year	+138
HP	+17.5
Milk	+25
Doc.	+12
Ultrasound EPDs	
CW	+75
Marb.	+13
REA	+89
Genomic	
Tend	13%

BW	Adj. WW	Wt. 2-8-25	Act. Scrotal
86	683	1660	40



# EVENSON APPEARANCE 3496

Tattoo: 3496 OHF DOB: 9/05/23 Reg. # \*21000262

FREYS APPEARANCE

SIRE: RIDL APPEARANCE 707  
BLACKBIRD 1434 BAF

EVENSON STETSON 100X 730

DAM: EVENSON BLACKBIRD 9492  
EVENSON BLACKBIRD 4537

\$ Values	
Feed	+87
Grid	+49
Beef	+135

EPDs	
CED	+7
Birth	+2.1
Wean	+76
Year	+127
HP	+10.3
Milk	+26
Doc.	+28
Ultrasound EPDs	
CW	+56
Marb.	+69
REA	+43
Genomic	
Tend	16%

BW	Adj. WW	Wt. 2-8-25	Act. Scrotal
88	661	1460	37



# EVENSON QUALITY 3499

Tattoo: 3499 OHP DOB: 9/05/23 Reg. # 21000264

KR QUALITY 8525

SIRE: FREYS QUALITY 0187  
F A R MISS BLACKCAP 51A

CONNELLY BLACK GRANITE

DAM: EVENSON DAISY 7447  
EVENSON DAISY 0752

\$ Values	
Feed	+101
Grid	+26
Beef	+127

EPDs	
CED	+1
Birth	+3.7
Wean	+84
Year	+138
HP	+17.7
Milk	+29
Doc.	+33
Ultrasound EPDs	
CW	+64
Marb.	+14
REA	+71
Genomic	
Tend	

BW	Adj. WW	Wt. 2-8-25	Act. Scrotal
92	767	1750	41



# EVENSON SOUTHERN CHARM 3501

Tattoo: 3501 M1F-OHF DOB: 9/06/23 Reg. # \*21000265

BUBS SOUTHERN CHARM AA31

SIRE: EVENSON SOUTHERN CHARM 086  
EVENSON QUEEN 693

JINDRA KINETIC

DAM: EVENSON QUEEN 8502  
EVENSON QUEEN 0131

\$ Values	
Feed	+96
Grid	+55
Beef	+151

EPDs	
CED	-5
Birth	+5.8
Wean	+70
Year	+118
HP	+10.4
Milk	+30
Doc.	+23
Ultrasound EPDs	
CW	+57
Marb.	+50
REA	+1.00
Genomic	
Tend	

BW	Adj. WW	Wt. 2-8-25	Act. Scrotal
94	604	1540	38



# EVENSON SUMMATION 3504

Tattoo: 3504 OHF DOB: 9/07/23 Reg. # \*21012812

K C F BENNETT CONSENT Y75

SIRE: K C F BENNETT SUMMATION  
THOMAS PATRICIA 9705

EVENSON TOP CUT 5408

DAM: EVENSON ELBA 8470  
EVENSON ELBA 6463

\$ Values	
Feed	+130
Grid	+36
Beef	+166

EPDs	
CED	+3
Birth	+3.6
Wean	+81
Year	+150
HP	+15.0
Milk	+38
Doc.	+23
Ultrasound EPDs	
CW	+81
Marb.	+23
REA	+92
Genomic	
Tend	

BW	Adj. WW	Wt. 2-8-25	Act. Scrotal
82	639	1685	38



# EVENSON COMRADE 3505

Tattoo: 3505 DOB: 9/11/23 Reg. # 21000267

KESSLERS COMMODORE 6516

SIRE: EVENSON COMRADE 9129  
EVENSON QUEEN 182

BASIN EXCITEMENT

DAM: EVENSON BLACKBIRD 4534  
EVENSON BLACKBIRD 1353

\$ Values	
Feed	+70
Grid	+43
Beef	+113

EPDs	
CED	+7
Birth	+1.4
Wean	+69
Year	+113
HP	+13.5
Milk	+27
Doc.	+26
Ultrasound EPDs	
CW	+36
Marb.	+45
REA	+53
Genomic	
Tend	

BW	Adj. WW	Wt. 2-8-25	Act. Scrotal
84	685	1445	37



# EVENSON COMRADE 3509

Tattoo: 3509 DOB: 9/13/23 Reg. # 21000270

KESSLERS COMMODORE 6516

SIRE: EVENSON COMRADE 9129  
EVENSON QUEEN 182

JINDRA ACCLAIM

DAM: EVENSON BLACKBIRD 7441  
EVENSON BLACKBIRD 4534

\$ Values	
Feed	+107
Grid	+33
Beef	+140

EPDs	
CED	+3
Birth	+3.1
Wean	+86
Year	+158
HP	+6.1
Milk	+22
Doc.	+26
Ultrasound EPDs	
CW	+69
Marb.	+21
REA	+59
Genomic	
Tend	

BW	Adj. WW	Wt. 2-8-25	Act. Scrotal
82	640	1690	41





## EVENSON COMRADE 3511

Tattoo: 3511 OHF DOB: 9/15/23 Reg. # \*21000272

SIRE: EVENSON COMRADE 9129  
EVENSON QUEEN 182

DAM: JINDRA ACCLAIM  
EVENSON QUEEN 9488  
EVENSON QUEEN 1730



\$ Values	
Feed	+121
Grid	+67
Beef	+188

EPDs	
CED	+3
Birth	+2.7
Wean	+84
Year	+155
HP	+9.8
Milk	+28
Doc.	+21
Ultrasound EPDs	
CW	+77
Marb.	+87
REA	+7.9

BW	Adj. WW	Wt. 2-8-25	Act. Scrotal
80	721	1720	40

Genomic	
Tend	



## EVENSON COMRADE 3513

Tattoo: 3513 DOB: 9/15/23 Reg. # \*21000274

SIRE: EVENSON COMRADE 9129  
EVENSON QUEEN 182

DAM: JINDRA KINETIC  
EVENSON BLACKBIRD 8526  
EVENSON BLACKBIRD 0743

\$ Values	
Feed	+100
Grid	+41
Beef	+141

BW	Adj. WW	Wt. 2-8-25	Act. Scrotal
86	659	1505	42

EPDs	
CED	+3
Birth	+3.0
Wean	+79
Year	+131
HP	+7.2
Milk	+18
Doc.	+13
Ultrasound EPDs	
CW	+59
Marb.	+33
REA	+8.8

Genomic	
Tend	



## EVENSON COMRADE 3528

Tattoo: 3528 OHF DOB: 9/24/23 Reg. # 21000281

SIRE: EVENSON COMRADE 9129  
EVENSON QUEEN 182

DAM: JINDRA ACCLAIM  
EVENSON QUEEN DOLLY 7455  
EVENSON QUEEN DOLLY 4531



\$ Values	
Feed	+127
Grid	+56
Beef	+183

EPDs	
CED	+5
Birth	+7
Wean	+75
Year	+138
HP	+13.6
Milk	+29
Doc.	+23
Ultrasound EPDs	
CW	+76
Marb.	+70
REA	+6.9

BW	Adj. WW	Wt. 2-8-25	Act. Scrotal
82	653	1640	38

Genomic	
Tend	



## EVENSON COMRADE 3534

Tattoo: 3534 DOB: 10/08/23 Reg. # 21000283

SIRE: EVENSON COMRADE 9129  
EVENSON QUEEN 182

DAM: MAR INNOVATION 251  
EVENSON IDA 5458  
EVENSON IDA 8281



\$ Values	
Feed	+89
Grid	+64
Beef	+153

BW	Adj. WW	Wt. 2-8-25	Act. Scrotal
88	770	1415	38

EPDs	
CED	+8
Birth	+2.3
Wean	+70
Year	+113
HP	+9.5
Milk	+29
Doc.	+25
Ultrasound EPDs	
CW	+47
Marb.	+93
REA	+5.1

Genomic	
Tend	



# Yearling Bulls



## EVENSON THEDFORD 403

Tattoo: 403 DOB: 1/26/24 Reg. # \*21130237

Gen: Angus GS

SIRE: BAR R JET BLACK 5063  
HOFFMAN THEDFORD  
HA RITO LADY 3839

DAM: EVENSON BLACK GRANITE 837  
EVENSON THICKSET 2104  
EVENSON THICKSET 049



Dam's Record	
W	107
Y	111

\$ Values	
Feed	+133
Grid	+64
Beef	+197

EPDs	
CED	+12
Birth	+2.8
Wean	+93
Year	+161
HP	+15.3
Milk	+33
Doc.	+22
Ultrasound EPDs	
CW	+86
Marb.	+83
REA	+6.9

BW	Adj. WW	Adj. YW	Adj. Scrotal
70	827	1536	38.71

Genomic	
Tend	19%





**407**

## EVENSON CONCLUSION 407

Tattoo: 407      DOB: 1/29/24      Reg. # \*21130273

Gen: Angus GS

K C F BENNETT SUMMATION  
**SIRE:** V A R CONCLUSION 0234  
 SANDPOINT BLACKBIRD 8809

PRAIRIE PRIDE KENWORTH 7104

**DAM:** EVENSON LADY 1473  
 EVENSON LADY 5439

EPDs	
CED	+10
Birth	+2
Wean	+82
Year	+155
HP	+7.8
Milk	+27
Doc.	+19
Ultrasound EPDs	
CW	+56
Marb.	+5.5
REA	+3.0
Genomic	
Tend	

Dam's Record		\$ Values	
W	104	Feed	+92
Y	102	Grid	+43
		Beef	+135

BW	Adj. WW	Adj. YW	Adj. Scrotal
68	802	1416	37.30

**410**

## EVENSON CONCLUSION 410

Tattoo: 410      DOB: 1/30/24      Reg. # 21130041

K C F BENNETT SUMMATION  
**SIRE:** V A R CONCLUSION 0234  
 SANDPOINT BLACKBIRD 8809



KESSLERS COMMODORE 6516  
**DAM:** EVENSON QUEEN 251  
 EVENSON QUEEN 839

Dam's Record		\$ Values	
W	116	Feed	+120
Y	106	Grid	+57
		Beef	+178

BW	Adj. WW	Adj. YW	Adj. Scrotal
70	894	1460	37.83

EPDs	
CED	+12
Birth	-.2
Wean	+99
Year	-171
HP	+12.6
Milk	+27
Doc.	+28
Ultrasound EPDs	
CW	+75
Marb.	+7.4
REA	+6.9
Genomic	
Tend	



**414**

## EVENSON COMMODORE 414

Tattoo: 414      DOB: 1/30/24      Reg. # \*21120071

Gen: Angus GS

KESSLERS COMMODORE 6516  
**SIRE:** EVENSON COMMODORE 0160  
 EVENSON ANN 685

EVENSON SOUTHERN CHARM 086  
**DAM:** EVENSON BLACK GIRL 2182  
 EVENSON BLACK GIRL 231

Dam's Record		\$ Values	
W	102	Feed	+125
Y	96	Grid	+51
		Beef	+176

BW	Adj. WW	Adj. YW	Adj. Scrotal
78	785	1323	38.33

EPDs	
CED	+10
Birth	+1.6
Wean	+96
Year	+164
HP	+12.7
Milk	+30
Doc.	+22
Ultrasound EPDs	
CW	+83
Marb.	+4.5
REA	+9.4
Genomic	
Tend	

**418**

## NOT REGISTERED

Tattoo: 418      DOB: 1/31/24      Not Registered

Gen: Angus GS

KESSLERS COMMODORE 1385  
**SIRE:** EVENSON EVEREST 964  
 KESSLERS RAINBOW 0595

**DAM:**

Dam's Record		\$ Values	
W	100	Feed	
Y	100	Grid	
		Beef	

BW	Adj. WW	Adj. YW	Adj. Scrotal
78	835	1403	40.87

Genomic	
CED	26%
Birth	28%
Wean	58%
Year	29%
HP	85%
Milk	1%
Doc.	44%
Ultrasound EPDs	
CW	43%
Marb.	78%
REA	69%
Genomic	
Tend	

**425**

## EVENSON BLACK BANDOIER 425

Tattoo: 425      DOB: 2/01/24      Reg. # \*21130212

Gen: Angus GS

CONNEALY CLARITY  
**SIRE:** QUAKER HILL BLACK BANDOIER  
 QUAKER HILL BLACKCAPMAY 9A27

PRAIRIE PRIDE KENWORTH 7104  
**DAM:** EVENSON QUEEN 2153  
 EVENSON QUEEN 8176

Dam's Record		\$ Values	
W	108	Feed	+108
Y	103	Grid	+46
		Beef	+154

BW	Adj. WW	Adj. YW	Adj. Scrotal
70	814	1464	40.90

EPDs	
CED	+15
Birth	-.8
Wean	+78
Year	+141
HP	+16.3
Milk	+30
Doc.	+15
Ultrasound EPDs	
CW	+66
Marb.	+4.1
REA	+8.7
Genomic	
Tend	

**426**

## EVENSON COMMODORE 426

Tattoo: 426      DOB: 2/01/24      Reg. # 21120106

KESSLERS COMMODORE 6516  
**SIRE:** EVENSON COMMODORE 0160  
 EVENSON ANN 685

HA VALUE ADDED 7578  
**DAM:** EVENSON BLACK GIRL 1448  
 EVENSON BLACK GIRL 4554

Dam's Record		\$ Values	
W	103	Feed	+105
Y	103	Grid	+56
		Beef	+161

BW	Adj. WW	Adj. YW	Adj. Scrotal
86	799	1428	34.40

EPDs	
CED	+6
Birth	+2.0
Wean	+79
Year	+134
HP	+12.5
Milk	+29
Doc.	+28
Ultrasound EPDs	
CW	+57
Marb.	+1.70
REA	+6.4
Genomic	
Tend	



# EVENSON CONCLUSION 432

Tattoo: 432 DOB: 2/03/24 Reg. # \*21130264

Gen: Angus GS

K C F BENNETT SUMMATION

SIRE: V A R CONCLUSION 0234  
SANDPOINT BLACKBIRD 8809

LT REVERED

DAM: EVENSON IDA 203  
EVENSON IDA 0128



### \$ Values

Dam's Record	
W	99
Y	98

Feed	+137
Grid	+62
Beef	+199

EPDs	
CED	+10
Birth	+1.2
Wean	+100
Year	+182
HP	+13.2
Milk	+24
Doc.	+30
Ultrasound EPDs	
CW	+91
Marb.	+81
REA	+9.5

BW	Adj. WW	Adj. YW	Adj. Scrotal
68	765	1354	37.96

Genomic	
Tend	



# EVENSON THEDFORD 433

Tattoo: 433 DOB: 2/03/24 Reg. # \*21130232

Gen: Angus GS

BAR R JET BLACK 5063

SIRE: HOFFMAN THEDFORD  
HA RITO LADY 3839

PRAIRIE PRIDE KENWORTH 7104

DAM: EVENSON BLACKBIRD 2144  
EVENSON BLACKBIRD 881

### \$ Values

Dam's Record	
W	92
Y	99

Feed	+116
Grid	+54
Beef	+170

EPDs	
CED	+11
Birth	+1.1
Wean	+78
Year	+144
HP	+20.3
Milk	+43
Doc.	+18
Ultrasound EPDs	
CW	+71
Marb.	+5.5
REA	+9.9

BW	Adj. WW	Adj. YW	Adj. Scrotal
70	711	1367	38.96

Genomic	
Tend	12%



# EVENSON CONCLUSION 440

Tattoo: 440 OHF DOB: 2/07/24 Reg. # \*21154653

Gen: Angus GS

K C F BENNETT SUMMATION

SIRE: V A R CONCLUSION 0234  
SANDPOINT BLACKBIRD 8809

EVENSON FOREFRONT 864

DAM: EVENSON QUEEN 05  
EVENSON QUEEN 8176

### \$ Values

Dam's Record	
W	104
Y	106

Feed	+98
Grid	+46
Beef	+144

EPDs	
CED	+15
Birth	-.2
Wean	+84
Year	+146
HP	+11.9
Milk	+33
Doc.	+30
Ultrasound EPDs	
CW	+62
Marb.	+4.5
REA	+7.5

BW	Adj. WW	Adj. YW	Adj. Scrotal
76	695	1354	38.25

Genomic	
Tend	



# EVENSON THEDFORD 445

Tattoo: 445 OHP DOB: 2/10/24 Reg. # 21130470

BAR R JET BLACK 5063

SIRE: HOFFMAN THEDFORD  
HA RITO LADY 3839

JINDRA KINETIC

DAM: EVENSON BLACKBIRD 6148  
EVENSON BLACKBIRD 218

### \$ Values

Dam's Record	
W	104
Y	102

Feed	+127
Grid	+51
Beef	+178

EPDs	
CED	+7
Birth	+1.7
Wean	+84
Year	+146
HP	+14.5
Milk	+32
Doc.	+20
Ultrasound EPDs	
CW	+67
Marb.	+5.3
REA	+7.7

BW	Adj. WW	Adj. YW	Adj. Scrotal
84	843	1451	38.16

Genomic	
Tend	



# EVENSON SOUTHERN CHARM 446

Tattoo: 446 M1F DOB: 2/10/24 Reg. # \*21120108

Gen: Angus GS

BUBS SOUTHERN CHARM AA31

SIRE: EVENSON SOUTHERN CHARM 086  
EVENSON QUEEN 693

HA PRIME CUT 4493

DAM: EVENSON BLACKBIRD 077  
EVENSON BLACKBIRD 427

### \$ Values

Dam's Record	
W	103
Y	103

Feed	+117
Grid	+62
Beef	+180

EPDs	
CED	+3
Birth	+2.1
Wean	+78
Year	+133
HP	+13.2
Milk	+31
Doc.	+22
Ultrasound EPDs	
CW	+71
Marb.	+6.0
REA	+1.36

BW	Adj. WW	Adj. YW	Adj. Scrotal
84	847	1457	36.35

Genomic	
Tend	



**447**

## EVENSON QUALITY 447

Tattoo: 447 OHF      DOB: 2/10/24      Reg. # \*21120109

Gen: Angus GS

KR QUALITY 8525

**SIRE:** FREYS QUALITY 0187  
F A R MISS BLACKCAP 51A

KESSLERS COMMODORE 6516

**DAM:** EVENSON THICKSET 108  
EVENSON THICKSET 954



### EPDs

CED	+8
Birth	+9
Wean	+84
Year	+149
HP	+16.5
Milk	+33
Doc.	+26

### Ultrasound EPDs

CW	+61
Marb.	+79
REA	+43

### \$ Values

Feed	+96
Grid	+55
Beef	+152

Dam's Record	
W	124
Y	115

BW	Adj. WW	Adj. YW	Adj. Scrotal
92	968	1653	36.68

### Genomic

Tend	20%
------	-----

**451**

## EVENSON COMMODORE 451

Tattoo: 451 M1F      DOB: 2/11/24      Reg. # 21130318

Gen: Angus GS

CONNEALY COMRADE 1385

**SIRE:** KESSLERS COMMODORE 6516  
KESSLERS RAINBOW 0595

FLAG CROSS COUNTRY 90052

**DAM:** EVENSON BLACKBIRD 427  
EVENSON BLACKBIRD 244



### EPDs

CED	+5
Birth	+9
Wean	+81
Year	+136
HP	+12.9
Milk	+28
Doc.	+19

### Ultrasound EPDs

CW	+65
Marb.	+90
REA	+60

### \$ Values

Feed	+107
Grid	+61
Beef	+168

Dam's Record	
W	98
Y	98

BW	Adj. WW	Adj. YW	Adj. Scrotal
88	897	1441	39.29

### Genomic

Tend	
------	--



**451**

*3/4 brother to Evenson Everest 964*

**453**

## EVENSON SOUTHERN CHARM 453

Tattoo: 453 OHF      DOB: 2/11/24      Reg. # \*21120111

Gen: Angus GS

BUBS SOUTHERN CHARM AA31

**SIRE:** EVENSON SOUTHERN CHARM 086  
EVENSON QUEEN 693

MUSGRAVE 316 EXCLUSIVE

**DAM:** EVENSON IDA 160  
EVENSON IDA 5172

### EPDs

CED	+3
Birth	+2.2
Wean	+80
Year	+133
HP	+13.0
Milk	+24
Doc.	+17

### Ultrasound EPDs

CW	+68
Marb.	+64
REA	+77

### \$ Values

Feed	+105
Grid	+54
Beef	+159

Dam's Record	
W	100
Y	99

BW	Adj. WW	Adj. YW	Adj. Scrotal
84	806	1379	37.72

### Genomic

Tend	
------	--



*Lot 447 as calf in pasture*



**463**

## EVENSON CONCLUSION 463

Tattoo: 463      DOB: 2/13/24      Reg. # \*21130276

Gen: Angus GS

K C F BENNETT SUMMATION

**SIRE:** V A R CONCLUSION 0234  
SANDPOINT BLACKBIRD 8809

KESSLERS COMMODORE 6516

**DAM:** EVENSON QUEEN 136  
EVENSON QUEEN 542



### EPDs

CED	+17
Birth	-3.1
Wean	+86
Year	+157
HP	+9.8
Milk	+44
Doc.	+27

### Ultrasound EPDs

CW	+78
Marb.	+88
REA	+77

### \$ Values

Feed	+117
Grid	+61
Beef	+178

Dam's Record	
W	106
Y	103

BW	Adj. WW	Adj. YW	Adj. Scrotal
68	833	1443	34.78

### Genomic

Tend	
------	--



# EVENSON BLACK BANDOIER 464

Tattoo: 464 DOB: 2/14/24 Reg. # \*21130338

Gen: Angus GS

CONNELLY CLARITY

SIRE: QUAKER HILL BLACK BANDOIER  
QUAKER HILL BLACKCAPMAY 9A27

KESSLERS COMMODORE 6516

DAM: EVENSON QUEEN 162

EVENSON QUEEN 1213

### \$ Values

Dam's Record	
W	108
Y	100

Feed	+132
Grid	+62
Beef	+194

BW	Adj. WW	Adj. YW	Adj. Scrotal
82	895	1450	38.81

EPDs	
CED	+7
Birth	+1.8
Wean	+98
Year	+170
HP	+14.3
Milk	+20
Doc.	+22
Ultrasound EPDs	
CW	+88
Marb.	+62
REA	+1.43
Genomic	
Tend	



Lot 464 as a calf



# EVENSON QUALITY 465

Tattoo: 465 DOB: 2/14/24 Reg. # \*21120113

Gen: Angus GS

KR QUALITY 8525

SIRE: FREYS QUALITY 0187  
F A R MISS BLACKCAP 51A

EVENSON EVEREST 964

DAM: EVENSON BLACKBIRD 144

EVENSON BARB 7125

### \$ Values

Dam's Record	
W	114
Y	113

Feed	+108
Grid	+36
Beef	+143

BW	Adj. WW	Adj. YW	Adj. Scrotal
84	882	1540	40.81

EPDs	
CED	+4
Birth	+6
Wean	+80
Year	+144
HP	+18.3
Milk	+31
Doc.	+17
Ultrasound EPDs	
CW	+67
Marb.	+39
REA	+4.4
Genomic	
Tend	14%



465



# EVENSON BROADVIEW 467

Tattoo: 467 OHF DOB: 2/14/24 Reg. # \*21130531

Gen: Angus GS

VERMILION SPUR E119

SIRE: HEIKEN BROADVIEW  
JCH BHA KAREN 7815

HA PRIME CUT 4493

DAM: EVENSON QUEEN 149

EVENSON QUEEN 762



### \$ Values

Dam's Record	
W	107
Y	108

Feed	+105
Grid	+69
Beef	+173

BW	Adj. WW	Adj. YW	Adj. Scrotal
94	878	1507	38.81

EPDs	
CED	+8
Birth	+2.3
Wean	+96
Year	+163
HP	+14.0
Milk	+19
Doc.	+21
Ultrasound EPDs	
CW	+71
Marb.	+95
REA	+7.2
Genomic	
Tend	



467



# EVENSON QUALITY 468

Tattoo: 468 OHF DOB: 2/15/24 Reg. # \*21120114

Gen: Angus GS

KR QUALITY 8525

SIRE: FREYS QUALITY 0187  
F A R MISS BLACKCAP 51A

HA PRIME CUT 4493

DAM: EVENSON QUEEN 014

EVENSON QUEEN 819

### \$ Values

Dam's Record	
W	105
Y	101

Feed	+86
Grid	+33
Beef	+118

BW	Adj. WW	Adj. YW	Adj. Scrotal
94	886	1448	35.51

EPDs	
CED	+5
Birth	+1.6
Wean	+81
Year	+135
HP	+16.8
Milk	+22
Doc.	+21
Ultrasound EPDs	
CW	+51
Marb.	+28
REA	+6.1
Genomic	
Tend	6%



468



**473**

## EVENSON COMMODORE 473

Tattoo: 473 OHF DOB: 2/15/24 Reg. # \*21120115  
Gen: Angus GS

SIRE: EVENSON COMMODORE 6516  
EVENSON COMMODORE 0160  
EVENSON ANN 685



DAM: EVENSON BLACKBIRD1165  
EVENSON BLACKBIRD 2107

\$ Values	
Feed	+90
Grid	+59
Beef	+149

Dam's Record	
W	95
Y	102

EPDs	
CED	+9
Birth	+2
Wean	+83
Year	+137
HP	+12.5
Milk	+25
Doc.	+30
Ultrasound EPDs	
CW	+56
Marb.	+81
REA	+60
Genomic	
Tend	25%

BW	Adj. WW	Adj. YW	Adj. Scrotal
76	813	1407	38.84

**474**

## EVENSON THEDFORD 474

Tattoo: 474 DDF-M1F DOB: 2/15/24 Reg. # \*21130422  
Gen: Angus GS

SIRE: HOFFMAN THEDFORD  
HA RITO LADY 3839

DAM: EVENSON FOREFRONT 864  
EVENSON BLACKBIRD 024  
EVENSON BLACKBIRD 886

\$ Values	
Feed	+97
Grid	+34
Beef	+131

Dam's Record	
W	106
Y	103

BW	Adj. WW	Adj. YW	Adj. Scrotal
84	895	1457	37.51

EPDs	
CED	+9
Birth	+1.3
Wean	+83
Year	+139
HP	+13.5
Milk	+32
Doc.	+27
Ultrasound EPDs	
CW	+58
Marb.	+27
REA	+41
Genomic	
Tend	



**475**

## EVENSON CONCLUSION475

Tattoo: 475 OHF DOB: 2/15/24 Reg. # \*21130297  
Gen: Angus GS

SIRE: V A R CONCLUSION 0234  
SANDPOINT BLACKBIRD 8809

DAM: EVENSON FOREFRONT 864  
EVENSON BLACKBIRD 024  
EVENSON BLACKBIRD 886



\$ Values	
Feed	+97
Grid	+56
Beef	+153

Dam's Record	
W	106
Y	101

BW	Adj. WW	Adj. YW	Adj. Scrotal
80	763	1353	38.84

EPDs	
CED	+17
Birth	-.7
Wean	+72
Year	+127
HP	+15.5
Milk	+28
Doc.	+27
Ultrasound EPDs	
CW	+55
Marb.	+74
REA	+54
Genomic	
Tend	

**476**

## EVENSON QUALITY 476

Tattoo: 476 M1F DOB: 2/16/24 Reg. # 21120116  
Gen: Angus GS

SIRE: FREYS QUALITY 0187  
F A R MISS BLACKCAP 51A

DAM: EVENSON BLACKBIRD 0141  
EVENSON BLACKBIRD 605

\$ Values	
Feed	+99
Grid	+51
Beef	+150

Dam's Record	
W	115
Y	103

BW	Adj. WW	Adj. YW	Adj. Scrotal
94	874	1384	40.54

EPDs	
CED	-1
Birth	+3.0
Wean	+78
Year	+124
HP	+14.5
Milk	+34
Doc.	+7
Ultrasound EPDs	
CW	+65
Marb.	+61
REA	+70
Genomic	
Tend	

**477**

## EVENSON QUALITY 477

Tattoo: 477 DDP-M1P-OHP DOB: 2/16/24 Reg. # 21120117

SIRE: FREYS QUALITY 0187  
F A R MISS BLACKCAP 51A

DAM: EVENSON FOREFRONT 864  
EVENSON BLACKBIRD 024  
EVENSON BLACKBIRD 886

\$ Values	
Feed	+101
Grid	+36
Beef	+137

Dam's Record	
W	106
Y	102

BW	Adj. WW	Adj. YW	Adj. Scrotal
80	832	1424	34.38

EPDs	
CED	+2
Birth	+3.0
Wean	+84
Year	+144
HP	+14.3
Milk	+26
Doc.	+24
Ultrasound EPDs	
CW	+59
Marb.	+38
REA	+35
Genomic	
Tend	





**483** **EVENSON ARCHITECT 483**  
 Tattoo: 483      DOB: 2/18/24      Reg. # 21130664  
 Gen: Angus GS  
 SYDGEN BLUEPRINT  
**SIRE:** S ARCHITECT 9501  
 S BLOSSOM 7514  
 EVENSON STETSON 100X  
**DAM:** EVENSON BLACKBIRD 5108  
 EVENSON BLACKBIRD 0232


Dam's Record		\$ Values	
W	105	Feed	+106
Y	105	Grid	+50
		Beef	+155

BW	Adj. WW	Adj. YW	Adj. Scrotal
88	893	1472	40.43

EPDs	
CED	+8
Birth	+5
Wean	+79
Year	+136
HP	+18.9
Milk	+28
Doc.	+19
Ultrasound EPDs	
CW	+70
Marb.	+57
REA	+73
Genomic	
Tend	



**486** **EVENSON CONCLUSION 486**  
 Tattoo: 486      M1F-OHF      DOB: 2/18/24      Reg. # \*21154650  
 Gen: Angus GS  
 K C F BENNETT SUMMATION  
**SIRE:** V A R CONCLUSION 0234  
 SANDPOINT BLACKBIRD 8809  
 KESSLERS COMMODORE 6516  
**DAM:** EVENSON MARY 181  
 EVENSON MARY 8134



Dam's Record		\$ Values	
W	102	Feed	+107
Y	100	Grid	+71
		Beef	+178

BW	Adj. WW	Adj. YW	Adj. Scrotal
80	788	1420	37.94

EPDs	
CED	+8
Birth	+2.0
Wean	+92
Year	+156
HP	+10.1
Milk	+28
Doc.	+31
Ultrasound EPDs	
CW	+70
Marb.	+86
REA	+1.09
Genomic	
Tend	

**491** **EVENSON THEDFORD 491**  
 Tattoo: 491      DOB: 2/19/24      Reg. # \*21130417  
 Gen: Angus GS  
 BAR R JET BLACK 5063  
**SIRE:** HOFFMAN THEDFORD  
 HA RITO LADY 3839  
 BT INCREDIBLE 0368  
**DAM:** EVENSON BLACKBIRD 059  
 EVENSON BLACKBIRD 720


Dam's Record		\$ Values	
W	99	Feed	+104
Y	105	Grid	+45
		Beef	+149

BW	Adj. WW	Adj. YW	Adj. Scrotal
90	768	1459	40.64

EPDs	
CED	+9
Birth	+1.6
Wean	+78
Year	+139
HP	+12.7
Milk	+44
Doc.	+24
Ultrasound EPDs	
CW	+63
Marb.	+50
REA	+51
Genomic	
Tend	9%



**496** **EVENSON DONE DEAL 496**  
 Tattoo: 496      DOB: 2/22/24      Reg. # \*21120118  
 Gen: Angus GS  
 BALDRIDGE DONE DEAL  
**SIRE:** VAR DONE DEAL 2188  
 VAR MAGIC BLACKBIRD 966  
 KESSLERS COMMODORE 6516  
**DAM:** EVENSON MARY 263  
 EVENSON MARY 8134



Dam's Record		\$ Values	
W	105	Feed	+115
Y	109	Grid	+72
		Beef	+187

BW	Adj. WW	Adj. YW	Adj. Scrotal
86	810	1500	39.57

EPDs	
CED	+4
Birth	+2.9
Wean	+84
Year	+146
HP	+9.6
Milk	+32
Doc.	+19
Ultrasound EPDs	
CW	+79
Marb.	+1.03
REA	+82
Genomic	
Tend	

**497**

# EVENSON BLACK BANDOIER 497

Tattoo: 497 OHF      DOB: 2/22/24      Reg. # 21130375  
Gen: Angus GS

CONNEALY CLARITY

SIRE: QUAKER HILL BLACK BANDOLIER  
QUAKER HILL BLACKCAPMAY 9A27

JINDRA KINETIC

DAM: EVENSON QUEEN 6123  
EVENSON QUEEN 018



\$ Values	
Feed	+106
Grid	+61
Beef	+167

Dam's Record	
W	105
Y	104

BW	Adj. WW	Adj. YW	Adj. Scrotal
82	840	1414	38.54

EPDs	
CED	+5
Birth	+1.7
Wean	+79
Year	+131
HP	+11.5
Milk	+29
Doc.	+30
Ultrasound EPDs	
CW	+66
Marb.	+79
REA	+55
Genomic	
Tend	



**4101**

# EVENSON DONE DEAL 4101

Tattoo: 4101      DOB: 2/23/24      Reg. # \*21120062  
Gen: Angus GS

BALDRIDGE DONE DEAL

SIRE: VAR DONE DEAL 2188  
VAR MAGIC BLACKBIRD 966

LT REVERED

DAM: EVENSON ANN 243  
EVENSON ANN 9133



\$ Values	
Feed	+90
Grid	+56
Beef	+146

Dam's Record	
W	99
Y	93

BW	Adj. WW	Adj. YW	Adj. Scrotal
68	762	1290	37.60

EPDs	
CED	+13
Birth	-.8
Wean	+68
Year	+124
HP	+12.2
Milk	+26
Doc.	+20
Ultrasound EPDs	
CW	+48
Marb.	+81
REA	+51
Genomic	
Tend	25%



**4103**

# EVENSON COMRADE 4103

Tattoo: 4103      DOB: 2/24/24      Reg. # \*21122108  
Gen: Angus GS

KESSLERS COMMODORE 6516

SIRE: EVENSON COMRADE 9129  
EVENSON QUEEN 182

JINDRA ACCLAIM

DAM: EVENSON QUEEN 9134  
EVENSON QUEEN 0124

\$ Values	
Feed	+115
Grid	+36
Beef	+151

Dam's Record	
W	106
Y	101

BW	Adj. WW	Adj. YW	Adj. Scrotal
94	866	1516	37.64

EPDs	
CED	+3
Birth	+2.8
Wean	+82
Year	+149
HP	+9.9
Milk	+28
Doc.	+29
Ultrasound EPDs	
CW	+71
Marb.	+22
REA	+90
Genomic	
Tend	



**4105**

# EVENSON THEDFORD 4105

Tattoo: 4105      DOB: 2/24/24      Reg. # 21130402

BAR R JET BLACK 5063

SIRE: HOFFMAN THEDFORD  
HA RITO LADY 3839

EVENSON EVEREST 964

DAM: EVENSON QUEEN 190  
EVENSON QUEEN 358

\$ Values	
Feed	+114
Grid	+54
Beef	+168

Dam's Record	
W	106
Y	104

BW	Adj. WW	Adj. YW	Adj. Scrotal
78	827	1432	38.13

EPDs	
CED	+11
Birth	+.2
Wean	+78
Year	+136
HP	+15.5
Milk	+32
Doc.	+22
Ultrasound EPDs	
CW	+61
Marb.	+70
REA	+61
Genomic	
Tend	





**4107** **EVENSON THEDFORD 4107**  
 Tattoo: 4107      DOB: 2/24/24      Reg. # \*21130408  
 Gen: Angus GS  
 BAR R JET BLACK 5063  
**SIRE:** HOFFMAN THEDFORD  
 HA RITO LADY 3839  
 KESSLERS COMMODORE 6516  
**DAM:** EVENSON ANN 134  
 EVENSON ANN 601

EPDs	
CED	+5
Birth	+1.7
Wean	+90
Year	+158
HP	+13.0
Milk	+32
Doc.	+20

Ultrasound EPDs	
CW	+84
Marb.	+5.3
REA	+6.8

\$ Values	
Feed	+136
Grid	+49
Beef	+185

Dam's Record	
W	117
Y	108

BW	Adj. WW	Adj. YW	Adj. Scrotal
88	831	1489	41.13

Genomic	
Tend	

**4111** **EVENSON QUALITY 4111**  
 Tattoo: 4111      OHF      DOB: 2/25/24      Reg. # \*21120064  
 Gen: Angus GS  
 KR QUALITY 8525  
**SIRE:** FREYS QUALITY 0187  
 F A R MISS BLACKCAP 51A  
 JINDRA ACCLAIM  
**DAM:** EVENSON QUEEN 043  
 EVENSON QUEEN 542

EPDs	
CED	+10
Birth	-.3
Wean	+56
Year	+108
HP	+15.0
Milk	+31
Doc.	+17

Ultrasound EPDs	
CW	+38
Marb.	+6.2
REA	+2.0

\$ Values	
Feed	+87
Grid	+45
Beef	+132

Dam's Record	
W	105
Y	102

BW	Adj. WW	Adj. YW	Adj. Scrotal
80	819	1422	37.83

Genomic	
Tend	

**4115** **EVENSON QUALITY 4115**  
 Tattoo: 4115      DOB: 2/25/24      Reg. # 21120065  
 Gen: Angus GS  
 KR QUALITY 8525  
**SIRE:** FREYS QUALITY 0187  
 F A R MISS BLACKCAP 51A  
 FREYS APPEARANCE  
**DAM:** EVENSON QUEEN 7106  
 EVENSON QUEEN 1111

EPDs	
CED	+4
Birth	+1.7
Wean	+65
Year	+108
HP	+19.3
Milk	+19
Doc.	+15

Ultrasound EPDs	
CW	+33
Marb.	+3.4
REA	+3.5

\$ Values	
Feed	+66
Grid	+33
Beef	+99

Dam's Record	
W	90
Y	92

BW	Adj. WW	Adj. YW	Adj. Scrotal
84	730	1223	34.64

Genomic	
Tend	

**4116** **EVENSON CONCLUSION 4116**  
 Tattoo: 4116      DOB: 2/26/24      Reg. # \*21130335  
 Gen: Angus GS  
 K C F BENNETT SUMMATION  
**SIRE:** V A R CONCLUSION 0234  
 SANDPOINT BLACKBIRD 8809  
 RIDL APPEARANCE 707  
**DAM:** EVENSON QUEEN 9174  
 EVENSON QUEEN 422

EPDs	
CED	+10
Birth	+9
Wean	+96
Year	+164
HP	+11.5
Milk	+23
Doc.	+27

Ultrasound EPDs	
CW	+73
Marb.	+4.5
REA	+9.1

\$ Values	
Feed	+108
Grid	+45
Beef	+152

Dam's Record	
W	94
Y	104

BW	Adj. WW	Adj. YW	Adj. Scrotal
78	672	1379	34.70

Genomic	
Tend	

**4118** **EVENSON THEDFORD 4118**  
 Tattoo: 4118      M1F-OHF      DOB: 2/26/24      Reg. # 21130474  
 Gen: Angus GS  
 BAR R JET BLACK 5063  
**SIRE:** HOFFMAN THEDFORD  
 HA RITO LADY 3839  
 PRAIRIE PRIDE NEXT STEP 2036  
**DAM:** EVENSON QUEEN 539  
 EVENSON QUEEN 216

EPDs	
CED	+14
Birth	-1.4
Wean	+65
Year	+121
HP	+13.0
Milk	+25
Doc.	+10

Ultrasound EPDs	
CW	+49
Marb.	+4.1
REA	+5.8

\$ Values	
Feed	+97
Grid	+40
Beef	+137

Dam's Record	
W	94
Y	98

BW	Adj. WW	Adj. YW	Adj. Scrotal
68	686	1336	38.69

Genomic	
Tend	

**4119** **EVENSON EVEREST 4119**  
 Tattoo: 4119      DOB: 2/27/24      Reg. # 21120066  
 Gen: Angus GS  
 KESSLERS COMMODORE 6516  
**SIRE:** EVENSON EVEREST 964  
 EVENSON BLACKBIRD 244  
 SSAFE TIGER 305  
**DAM:** EVENSON BLACKBIRD 7498  
 EVENSON BLACKBIRD 5461

EPDs	
CED	+4
Birth	+1
Wean	+40
Year	+87
HP	+15.0
Milk	+45
Doc.	+19

Ultrasound EPDs	
CW	+43
Marb.	+5.6
REA	+5.9

\$ Values	
Feed	+87
Grid	+47
Beef	+134

Dam's Record	
W	112
Y	95

BW	Adj. WW	Adj. YW	Adj. Scrotal
80	802	1311	38.70

Genomic	
Tend	





### EVENSON THEDFORD 4125

Tattoo: 4125 DOB: 2/29/24 Reg. # 21130478

Gen: Angus GS

BAR R JET BLACK 5063

SIRE: HOFFMAN THEDFORD  
HA RITO LADY 3839

EVENSON UPWARD 176

DAM: EVENSON QUEEN 3125  
EVENSON QUEEN 9202

#### \$ Values

Dam's Record		Feed +90
W	91	Grid +46
Y	94	Beef +136

EPDs	
CED	+11
Birth	+1
Wean	+68
Year	+115
HP	+12.5
Milk	+26
Doc.	+22
Ultrasound EPDs	
CW	+47
Marb.	+57
REA	+61

BW	Adj. WW	Adj. YW	Adj. Scrotal
80	748	1385	38.49

Genomic	
Tend	7%



### EVENSON COMMODORE 4126

Tattoo: 4126 DOB: 2/29/24 Reg. # 21120068

Gen: Angus GS

KESSLERS COMMODORE 6516

SIRE: EVENSON COMMODORE 0160  
EVENSON ANN 685

CONNELLY BLACK GRANITE

DAM: EVENSON BLACKBIRD 720  
EVENSON BLACKBIRD 5108

#### \$ Values

Dam's Record		Feed +120
W	107	Grid +45
Y	102	Beef +165

EPDs	
CED	+7
Birth	+1.4
Wean	+84
Year	+129
HP	+10.3
Milk	+35
Doc.	+20
Ultrasound EPDs	
CW	+77
Marb.	+48
REA	+66

BW	Adj. WW	Adj. YW	Adj. Scrotal
82	812	1442	37.77

Genomic	
Tend	



### EVENSON BLACK BANDOIER 4127

Tattoo: 4127 DOB: 2/29/24 Reg. # 21130378

Gen: Angus GS

CONNELLY CLARITY

SIRE: QUAKER HILL BLACK BANDOLIER  
QUAKER HILL BLACKCAPMAY 9A27

JINDRA KINETIC

DAM: EVENSON QUEEN DOLLY 665  
EVENSON QUEEN DOLLY 3120

#### \$ Values

Dam's Record		Feed +151
W	100	Grid +63
Y	104	Beef +214

EPDs	
CED	+7
Birth	+2.9
Wean	+91
Year	+168
HP	+11.9
Milk	+32
Doc.	+23
Ultrasound EPDs	
CW	+97
Marb.	+60
REA	+1.44

BW	Adj. WW	Adj. YW	Adj. Scrotal
88	811	1472	35.77

Genomic	
Tend	



### EVENSON COMMODORE 4131

Tattoo: 4131 DOB: 3/01/24 Reg. # \*21120069

Gen: Angus GS

KESSLERS COMMODORE 6516

SIRE: EVENSON COMMODORE 0160  
EVENSON ANN 685

EVENSON COWBOY UP 8141

DAM: EVENSON BLACK GIRL1133  
EVENSON BLACK GIRL 9156

#### \$ Values

Dam's Record		Feed +104
W	108	Grid +38
Y	100	Beef +142

EPDs	
CED	+8
Birth	+8
Wean	+80
Year	+133
HP	+10.4
Milk	+34
Doc.	+19
Ultrasound EPDs	
CW	+67
Marb.	+34
REA	+80

BW	Adj. WW	Adj. YW	Adj. Scrotal
80	822	1446	38.82

Genomic	
Tend	



### EVENSON THEDFORD4133

Tattoo: 4133 OHF DOB: 3/01/24 Reg. # \*21130447

Gen: Angus GS

BAR R JET BLACK 5063

SIRE: HOFFMAN THEDFORD  
HA RITO LADY 3839

KESSLERS COMMODORE 6516

DAM: EVENSON QUEEN 9125  
EVENSON QUEEN 5130



#### \$ Values

Dam's Record		Feed +126
W	92	Grid +65
Y	99	Beef +191

EPDs	
CED	+10
Birth	+1.0
Wean	+85
Year	+151
HP	+14.6
Milk	+25
Doc.	+21
Ultrasound EPDs	
CW	+76
Marb.	+79
REA	+98

BW	Adj. WW	Adj. YW	Adj. Scrotal
82	657	1345	37.83

Genomic	
Tend	



### EVENSON COMMODORE 4137

Tattoo: 4137 OHF DOB: 3/02/24 Reg. # 21130312

Gen: Angus GS

CONNELLY COMRADE 1385

SIRE: KESSLERS COMMODORE 6516  
KESSLERS RAINBOW 0595

LT FOREFRONT 6088

DAM: EVENSON DAISY 8104  
EVENSON DAISY 6116

#### \$ Values

Dam's Record		Feed +112
W	103	Grid +51
Y	110	Beef +163

EPDs	
CED	+5
Birth	+1.8
Wean	+74
Year	+132
HP	+9.3
Milk	+36
Doc.	+26
Ultrasound EPDs	
CW	+59
Marb.	+62
REA	+54

BW	Adj. WW	Adj. YW	Adj. Scrotal
88	843	1595	38.83

Genomic	
Tend	



### EVENSON SOUTHERN CHARM 4138

Tattoo: 4138 DOB: 3/02/24 Reg. # 21120070

Gen: Angus GS

BUBS SOUTHERN CHARM AA31

SIRE: EVENSON SOUTHERN CHARM 086  
EVENSON QUEEN 693

JINDRA KINETIC

DAM: EVENSON ANN 8142  
EVENSON ANN 546



#### \$ Values

Dam's Record		Feed +78
W	98	Grid +65
Y	96	Beef +143

EPDs	
CED	+9
Birth	+1.8
Wean	+60
Year	+100
HP	+12.8
Milk	+25
Doc.	+23
Ultrasound EPDs	
CW	+48
Marb.	+89
REA	+69

BW	Adj. WW	Adj. YW	Adj. Scrotal
92	818	1442	35.33

Genomic	
Tend	



# EVENSON SUMMATION 4139

Tattoo: 4139 DOB: 3/02/24 Reg. # \*21132016  
Gen: Angus GS

SIRE: K C F BENNETT CONSENT Y75  
BENNETT SUMMATION  
THOMAS PATRICIA 9705



DAM: EVENSON QUEEN 907  
EVENSON QUEEN 7149

\$ Values	
Dam's Record	Feed +110
W 102	Grid +66
Y 107	Beef +176

EPDs	
CED	+13
Birth	-1.1
Wean	+72
Year	+130
HP	+10.3
Milk	+30
Doc.	+25
Ultrasound EPDs	
CW	+60
Marb.	+1.08
REA	+3.4

BW	Adj. WW	Adj. YW	Adj. Scrotal
78	777	1403	37.36

Genomic	
Tend	



# EVENSON QUALITY 4140

Tattoo: 4140 OHF DOB: 3/02/24 Reg. # 21120072  
Gen: Angus GS

SIRE: FREYS QUALITY 0187  
F A R MISS BLACKCAP 51A

DAM: EVENSON STETSON 100X  
EVENSON QUEEN 693  
EVENSON QUEEN 292

\$ Values	
Dam's Record	Feed +100
W 108	Grid +41
Y 106	Beef +141

EPDs	
CED	+4
Birth	+3.8
Wean	+79
Year	+137
HP	+20.8
Milk	+29
Doc.	+20
Ultrasound EPDs	
CW	+63
Marb.	+2.7
REA	+8.4

BW	Adj. WW	Adj. YW	Adj. Scrotal
98	771	1379	38.83

Genomic	
Tend	



# EVENSON QUALITY 4141

Tattoo: 4141 DOB: 3/02/24 Reg. # \*21120073  
Gen: Angus GS

SIRE: FREYS QUALITY 0187  
F A R MISS BLACKCAP 51A

DAM: BT INCREDIBLE 0368  
EVENSON BLACKBIRD 08  
EVENSON BLACKBIRD 822

\$ Values	
Dam's Record	Feed +107
W 109	Grid +40
Y 104	Beef +147

EPDs	
CED	-2
Birth	+3.9
Wean	+85
Year	+150
HP	+16.3
Milk	+28
Doc.	+22
Ultrasound EPDs	
CW	+67
Marb.	+4.2
REA	+5.6

BW	Adj. WW	Adj. YW	Adj. Scrotal
92	751	1428	37.52

Genomic	
Tend	



# EVENSON QUALITY 4144

Tattoo: 4144 OHF DOB: 3/03/24 Reg. # 21133083  
Gen: Angus GS

SIRE: FREYS QUALITY 0187  
F A R MISS BLACKCAP 51A

DAM: KG HIGH REGARD 2073  
EVENSON QUEEN 819  
EVENSON QUEEN 6114

\$ Values	
Dam's Record	Feed +87
W 96	Grid +24
Y 98	Beef +111

EPDs	
CED	+7
Birth	+1.5
Wean	+74
Year	+130
HP	+15.0
Milk	+32
Doc.	+29
Ultrasound EPDs	
CW	+50
Marb.	+1.1
REA	+4.7

BW	Adj. WW	Adj. YW	Adj. Scrotal
86	694	1305	36.86

Genomic	
Tend	14%



# EVENSON BLACK BANDOIER 4148

Tattoo: 4148 DOB: 3/04/24 Reg. # 21130358  
Gen: Angus GS

SIRE: CONNEALY CLARITY  
QUAKER HILL BLACK BANDOLIER  
QUAKER HILL BLACKCAPMAY 9A27



DAM: KESSLERS COMMODORE 6516  
EVENSON QUEEN DOLLY 987  
EVENSON QUEEN DOLLY 1129

\$ Values	
Dam's Record	Feed +76
W 94	Grid +88
Y 103	Beef +164

EPDs	
CED	+19
Birth	-3.2
Wean	+77
Year	+132
HP	+15.7
Milk	+27
Doc.	+23
Ultrasound EPDs	
CW	+46
Marb.	+1.28
REA	+8.0

BW	Adj. WW	Adj. YW	Adj. Scrotal
68	744	1390	38.93

Genomic	
Tend	



# EVENSON COMRADE 4151

Tattoo: 4151 DOB: 3/05/24 Reg. # 21120075  
Gen: Angus GS

SIRE: KESSLERS COMMODORE 6516  
EVENSON COMRADE 9129  
EVENSON QUEEN 182

DAM: KESSLERS COMMODORE 6516  
EVENSON BLACK GIRL 1157  
EVENSON BLACK GIRL 231

\$ Values	
Dam's Record	Feed +94
W 93	Grid +54
Y 97	Beef +148

EPDs	
CED	+16
Birth	-1.4
Wean	+67
Year	+115
HP	+9.3
Milk	+23
Doc.	+26
Ultrasound EPDs	
CW	+58
Marb.	+1.65
REA	+6.3

BW	Adj. WW	Adj. YW	Adj. Scrotal
70	636	1268	40.45

Genomic	
Tend	



# EVENSON QUALITY 4152

Tattoo: 4152 OHF DOB: 3/05/24 Reg. # 21133084  
Gen: Angus GS

SIRE: KR QUALITY 8525  
FREYS QUALITY 0187  
F A R MISS BLACKCAP 51A

DAM: VAR PROGRAMMER 2041  
EVENSON QUEEN 4161  
EVENSON QUEEN 108

\$ Values	
Dam's Record	Feed +73
W 96	Grid +50
Y 97	Beef +123

EPDs	
CED	+4
Birth	+1.8
Wean	+66
Year	+107
HP	+11.8
Milk	+25
Doc.	+20
Ultrasound EPDs	
CW	+38
Marb.	+7.1
REA	+1.2

BW	Adj. WW	Adj. YW	Adj. Scrotal
82	766	1432	41.03

Genomic	
Tend	





**4153** **EVENSON COMRADE 4153**  
 Tattoo: 4153      DOB: 3/05/24      Reg. # 21122109  
 Gen: Angus GS  
 KESSLERS COMMODORE 6516  
**SIRE:** EVENSON COMRADE 9129  
 EVENSON QUEEN 182  
 HA TOP FLIGHT 2314  
**DAM:** EVENSON BLACK GIRL 457  
 EVENSON BLACK GIRL 0105

Dam's Record		\$ Values	
W	103	Feed	+115
Y	103	Grid	+46
		Beef	+161


BW	Adj. WW	Adj. YW	Adj. Scrotal
96	834	1498	40.03

EPDs	
CED	-1
Birth	+3.8
Wean	+91
Year	+155
HP	+10.7
Milk	+28
Doc.	+23

Ultrasound EPDs	
CW	+73
Marb.	+4.4
REA	+8.0

Genomic	
Tend	

**4155** **EVENSON COMRADE 4155**  
 Tattoo: 4155      DOB: 3/05/24      Reg. # \*21120076  
 Gen: Angus GS  
 KESSLERS COMMODORE 6516  
**SIRE:** EVENSON COMRADE 9129  
 EVENSON QUEEN 182  
 JACS RARE FIND 6503  
**DAM:** EVENSON QUEEN 175  
 EVENSON QUEEN 646



Dam's Record		\$ Values	
W	102	Feed	+93
Y	99	Grid	+56
		Beef	+149

BW	Adj. WW	Adj. YW	Adj. Scrotal
80	788	1377	33.45

EPDs	
CED	+8
Birth	+1.2
Wean	+83
Year	+143
HP	+10.4
Milk	+27
Doc.	+26

Ultrasound EPDs	
CW	+55
Marb.	+7.6
REA	+3.8

Genomic	
Tend	

**4160** **EVENSON QUALITY 4160**  
 Tattoo: 4160      OHF      DOB: 3/06/24      Reg. # 21120078  
 Gen: Angus GS  
 KR QUALITY 8525  
**SIRE:** FREYS QUALITY 0187  
 F A R MISS BLACKCAP 51A  
 VAR PROGRAMMER 2041  
**DAM:** EVENSON IDA 5172  
 EVENSON IDA 0176

Dam's Record		\$ Values	
W	97	Feed	+73
Y	102	Grid	+28
		Beef	+101


BW	Adj. WW	Adj. YW	Adj. Scrotal
92	682	1424	37.98

EPDs	
CED	-3
Birth	+4.0
Wean	+71
Year	+128
HP	+13.6
Milk	+23
Doc.	+28

Ultrasound EPDs	
CW	+40
Marb.	+4.3
REA	-1.7

Genomic	
Tend	

**4168** **EVENSON EVEREST 4168**  
 Tattoo: 4168      OHF      DOB: 3/08/24      Reg. # \*21120079  
 Gen: Angus GS  
 KESSLERS COMMODORE 6516  
**SIRE:** EVENSON EVEREST 964  
 EVENSON BLACKBIRD 244  
 RIDL APPEARANCE 707  
**DAM:** EVENSON BLACKBIRD 0136  
 EVENSON BLACKBIRD 537



Dam's Record		\$ Values	
W	95	Feed	+83
Y	96	Grid	+33
		Beef	+115


BW	Adj. WW	Adj. YW	Adj. Scrotal
86	665	1323	38.21

EPDs	
CED	+9
Birth	+0
Wean	+60
Year	+100
HP	+11.9
Milk	+38
Doc.	+24

Ultrasound EPDs	
CW	+43
Marb.	+2.4
REA	+6.2

Genomic	
Tend	

**4170** **EVENSON SQUARE DEAL 4170**  
 Tattoo: 4170      DOB: 3/08/24      Reg. # \*21128453  
 Gen: Angus GS  
 MYERS FAIR-N-SQUARE M39  
**SIRE:** DEEP CREEK SQUARE DEAL  
 DEEP CREEK STEP LASS 064  
 EVENSON ACCLAIM 7135  
**DAM:** EVENSON ELBA 999  
 EVENSON ELBA 4111



Dam's Record		\$ Values	
W	95	Feed	+88
Y	100	Grid	+64
		Beef	+152

BW	Adj. WW	Adj. YW	Adj. Scrotal
82	710	1284	39.05

EPDs	
CED	+1
Birth	+1.2
Wean	+65
Year	+106
HP	+16.1
Milk	+34
Doc.	+13

Ultrasound EPDs	
CW	+49
Marb.	+8.4
REA	+7.1

Genomic	
Tend	

**4171** **EVENSON SQUARE DEAL 4171**  
 Tattoo: 4171      DOB: 3/08/24      Reg. # 21128451  
 MYERS FAIR-N-SQUARE M39  
**SIRE:** DEEP CREEK SQUARE DEAL  
 DEEP CREEK STEP LASS 064  
 KESSLERS COMMODORE 6516  
**DAM:** EVENSON QUEEN 082  
 EVENSON QUEEN 4109

Dam's Record		\$ Values	
W	103	Feed	+114
Y	104	Grid	+54
		Beef	+168


BW	Adj. WW	Adj. YW	Adj. Scrotal
96	790	1436	39.21

EPDs	
CED	+4
Birth	+2.8
Wean	+87
Year	+146
HP	+15.2
Milk	+31
Doc.	+26

Ultrasound EPDs	
CW	+67
Marb.	+6.3
REA	+8.1

Genomic	
Tend	

**4174** **EVENSON COMRADE 4174**  
 Tattoo: 4174      DOB: 3/10/24      Reg. # \*21120080  
 Gen: Angus GS  
 KESSLERS COMMODORE 6516  
**SIRE:** EVENSON COMRADE 9129  
 EVENSON QUEEN 182  
 HA VALUE ADDED 7578  
**DAM:** EVENSON ANN 172  
 EVENSON ANN 230



Dam's Record		\$ Values	
W	97	Feed	+91
Y	101	Grid	+58
		Beef	+149

BW	Adj. WW	Adj. YW	Adj. Scrotal
86	689	1310	38.61

EPDs	
CED	+8
Birth	+2.6
Wean	+80
Year	+139
HP	+10.4
Milk	+24
Doc.	+33

Ultrasound EPDs	
CW	+54
Marb.	+7.1
REA	+9.0

Genomic	
Tend	



### EVENSON SOUTHERN CHARM 4180

Tattoo: 4180 DOB: 3/12/24 Reg. # 21120083

Gen: Angus GS

BUBS SOUTHERN CHARM AA31

SIRE: EVENSON SOUTHERN CHARM 086  
EVENSON QUEEN 693

CONNEALY BLACK GRANITE

DAM: EVENSON QUEEN 7113  
EVENSON QUEEN 182



\$ Values	
Feed	+50
Grid	+64
Beef	+114

Dam's Record	
W	95
Y	96

BW	Adj. WW	Adj. YW	Adj. Scrotal
88	765	1327	37.15

EPDs	
CED	+8
Birth	+1.8
Wean	+63
Year	+102
HP	+10.8
Milk	+27
Doc.	+16
Ultrasound EPDs	
CW	+22
Marb.	+81
REA	+68

Genomic	
Tend	



### EVENSON QUALITY 4181

Tattoo: 4181 OHF DOB: 3/12/24 Reg. # 21120084

Gen: Angus GS

KR QUALITY 8525

SIRE: FREYS QUALITY 0187  
F A R MISS BLACKCAP 51A

LT FOREFRONT 6088

DAM: EVENSON QUEEN 8149  
EVENSON QUEEN 664

\$ Values	
Feed	+97
Grid	+52
Beef	+149

Dam's Record	
W	100
Y	103

BW	Adj. WW	Adj. YW	Adj. Scrotal
88	724	1450	37.15

EPDs	
CED	-1
Birth	+3.3
Wean	+75
Year	+140
HP	+16.3
Milk	+29
Doc.	+26
Ultrasound EPDs	
CW	+55
Marb.	+79
REA	+38

Genomic	
Tend	14%



### EVENSON BLACK GRANITE 4182

Tattoo: 4182 OHF DOB: 3/13/24 Reg. # 21122110

Gen: Angus GS

CONNEALY BLACK GRANITE

SIRE: EVENSON BLACK GRANITE 837  
EVENSON QUEEN 619

BRUNS TOP CUT 373

DAM: EVENSON QUEEN 850  
EVENSON QUEEN 384



\$ Values	
Feed	+100
Grid	+61
Beef	+161

Dam's Record	
W	96
Y	96

BW	Adj. WW	Adj. YW	Adj. Scrotal
88	731	1377	41.18

EPDs	
CED	+9
Birth	+1.2
Wean	+42
Year	+85
HP	+15.4
Milk	+36
Doc.	+17
Ultrasound EPDs	
CW	+45
Marb.	+70
REA	+84

Genomic	
Tend	



### EVENSON SOUTHERN CHARM 4183

Tattoo: 4183 DDF-M1F DOB: 3/14/24 Reg. # 21120085

Gen: Angus GS

BUBS SOUTHERN CHARM AA31

SIRE: EVENSON SOUTHERN CHARM 086  
EVENSON QUEEN 693

JINDRA KINETIC

DAM: EVENSON BLACKBIRD 886  
EVENSON BLACKBIRD 529

\$ Values	
Feed	+114
Grid	+56
Beef	+170

Dam's Record	
W	92
Y	103

BW	Adj. WW	Adj. YW	Adj. Scrotal
94	835	1454	37.72

EPDs	
CED	+2
Birth	+3.5
Wean	+90
Year	+146
HP	+9.8
Milk	+22
Doc.	+27
Ultrasound EPDs	
CW	+75
Marb.	+60
REA	+91

Genomic	
Tend	



### EVENSON COMRADE 4184

Tattoo: 4184 DOB: 3/14/24 Reg. # \*21120086

Gen: Angus GS

KESSLERS COMMODORE 6516

SIRE: EVENSON COMRADE 9129  
EVENSON QUEEN 182

JINDRA ACCLAIM

DAM: EVENSON QUEEN 925  
EVENSON QUEEN 657

\$ Values	
Feed	+128
Grid	+51
Beef	+179

Dam's Record	
W	104
Y	105

BW	Adj. WW	Adj. YW	Adj. Scrotal
88	838	1524	41.25

EPDs	
CED	+7
Birth	+2.7
Wean	+83
Year	+149
HP	+11.6
Milk	+31
Doc.	+24
Ultrasound EPDs	
CW	+80
Marb.	+60
REA	+72

Genomic	
Tend	



4184



### EVENSON QUALITY 4186

Tattoo: 4186 DOB: 3/17/24 Reg. # 21120087

Gen: Angus GS

KR QUALITY 8525

SIRE: FREYS QUALITY 0187  
F A R MISS BLACKCAP 51A

BRUNS TOP CUT 373

DAM: EVENSON LADY 8144  
EVENSON LADY 1167

\$ Values	
Feed	+107
Grid	+37
Beef	+144

Dam's Record	
W	101
Y	101

BW	Adj. WW	Adj. YW	Adj. Scrotal
94	801	1427	37.31

EPDs	
CED	+1
Birth	+3.6
Wean	+75
Year	+135
HP	+13.6
Milk	+28
Doc.	+22
Ultrasound EPDs	
CW	+55
Marb.	+36
REA	+47

Genomic	
Tend	



### EVENSON QUALITY 4188

Tattoo: 4188 M1F DOB: 3/18/24 Reg. # \*21120088

Gen: Angus GS

KR QUALITY 8525

SIRE: FREYS QUALITY 0187  
F A R MISS BLACKCAP 51A

LT FOREFRONT 6088

DAM: EVENSON QUEEN 931  
EVENSON QUEEN 6191



\$ Values	
Feed	+98
Grid	+62
Beef	+160

Dam's Record	
W	106
Y	102

BW	Adj. WW	Adj. YW	Adj. Scrotal
94	803	1453	41.37

EPDs	
CED	-6
Birth	+5.1
Wean	+77
Year	+136
HP	+15.2
Milk	+26
Doc.	+27
Ultrasound EPDs	
CW	+60
Marb.	+91
REA	+26

Genomic	
Tend	10%



## EVENSON QUALITY 4189

Tattoo: 4189 DOB: 3/19/24 Reg. # 21120089

Gen: Angus GS

KR QUALITY 8525

SIRE: FREYS QUALITY 0187  
F A R MISS BLACKCAP 51A

KG HIGH REGARD 2073

DAM: EVENSON BLACKBIRD 822  
EVENSON BLACKBIRD 626

Dam's Record		\$ Values	
W	106	Feed	+105
Y	104	Grid	+31
		Beef	+136

BW	Adj. WW	Adj. YW	Adj. Scrotal
94	779	1453	36.38

EPDs	
CED	-4
Birth	+4.3
Wean	+76
Year	+130
HP	+15.3
Milk	+29
Doc.	+19
Ultrasound EPDs	
CW	+65
Marb.	+12
REA	+88

Genomic	
Tend	14%



## EVENSON QUALITY 4199

Tattoo: 4199 DOB: 3/24/24 Reg. # 21120091

Gen: Angus GS

KR QUALITY 8525

SIRE: FREYS QUALITY 0187  
F A R MISS BLACKCAP 51A

SITZ UPWARD 307R

DAM: EVENSON BLACKBIRD 450  
EVENSON BLACKBIRD 117

Dam's Record		\$ Values	
W	92	Feed	+89
Y	99	Grid	+39
		Beef	+127

BW	Adj. WW	Wt. 1-30-25	Act. Scrotal
92	703	1155	37.00

EPDs	
CED	+0
Birth	+3.0
Wean	+72
Year	+118
HP	+15.2
Milk	+21
Doc.	+26
Ultrasound EPDs	
CW	+49
Marb.	+35
REA	+49

Genomic	
Tend	



## EVENSON QUALITY 4205

Tattoo: 4205 M1F-OHF DOB: 3/26/24 Reg. # \*21120094

Gen: Angus GS

KR QUALITY 8525

SIRE: FREYS QUALITY 0187  
F A R MISS BLACKCAP 51A

HA PRIME CUT 4493

DAM: EVENSON THICKSET 940  
EVENSON THICKSET 6132

Dam's Record		\$ Values	
W	108	Feed	+101
Y	111	Grid	+53
		Beef	+154

BW	Adj. WW	Wt. 1-30-25	Act. Scrotal
94	742	1205	35.00

EPDs	
CED	+2
Birth	+3.2
Wean	+75
Year	+131
HP	+15.9
Milk	+34
Doc.	+20
Ultrasound EPDs	
CW	+61
Marb.	+62
REA	+66

Genomic	
Tend	



## EVENSON BLACK GRANITE 4213

Tattoo: 4213 M1F DOB: 3/28/24 Reg. # \*21120097

Gen: Angus GS

CONNEALY BLACK GRANITE

SIRE: EVENSON BLACK GRANITE 837  
EVENSON QUEEN 619

JINDRA ACCLAIM

DAM: EVENSON THICKSET 06  
EVENSON THICKSET 856

Dam's Record		\$ Values	
W	100	Feed	+131
Y	96	Grid	+58
		Beef	+189

BW	Adj. WW	Wt. 1-30-25	Act. Scrotal
88	812	1290	36.00

EPDs	
CED	+11
Birth	+1.3
Wean	+73
Year	+127
HP	+14.3
Milk	+29
Doc.	+19
Ultrasound EPDs	
CW	+77
Marb.	+63
REA	+91

Genomic	
Tend	



## EVENSON DONE DEAL 4217

Tattoo: 4217 DOB: 4/02/24 Reg. # \*21120099

Gen: Angus GS

BALDRIDGE DONE DEAL

SIRE: VAR DONE DEAL 2188  
VAR MAGIC BLACKBIRD 966

LT REVERED

DAM: EVENSON QUEEN 273  
EVENSON QUEEN 847



Dam's Record		\$ Values	
W	103	Feed	+117
Y		Grid	+65
		Beef	+182

BW	Adj. WW	Wt. 1-30-25	Act. Scrotal
74	799	1235	35.50

EPDs	
CED	+3
Birth	+4.0
Wean	+87
Year	+161
HP	+8.7
Milk	+28
Doc.	+33
Ultrasound EPDs	
CW	+78
Marb.	+84
REA	+88

Genomic	
Tend	



## EVENSON COMRADE 4221

Tattoo: 4221 OHF DOB: 4/04/24 Reg. # 21120103

Gen: Angus GS

KESSLERS COMMODORE 6516

SIRE: EVENSON COMRADE 9129  
EVENSON QUEEN 182

BALDRIDGE COMPASS C041

DAM: EVENSON QUEEN 833  
EVENSON QUEEN 6160

Dam's Record		\$ Values	
W	98	Feed	+96
Y	98	Grid	+33
		Beef	+128

BW	Adj. WW	Wt. 1-30-25	Act. Scrotal
82	711	1195	36.00

EPDs	
CED	+8
Birth	+1.2
Wean	+74
Year	+129
HP	+10.4
Milk	+21
Doc.	+24
Ultrasound EPDs	
CW	+57
Marb.	+30
REA	+43

Genomic	
Tend	



## EVENSON COMMODORE 4222

Tattoo: 4222 OHF DOB: 4/04/24 Reg. # 21120104

Gen: Angus GS

KESSLERS COMMODORE 6516

SIRE: EVENSON COMMODORE 0470  
EVENSON MARY 4510

EVENSON TOP CUT 8200

DAM: EVENSON QUEEN DOLLY 1174  
EVENSON QUEEN DOLLY 588

Dam's Record		\$ Values	
W	102	Feed	+101
Y	101	Grid	+46
		Beef	+147

BW	Adj. WW	Wt. 1-30-25	Act. Scrotal
80	771	1205	38.00

EPDs	
CED	+7
Birth	+1.2
Wean	+75
Year	+130
HP	+14.4
Milk	+34
Doc.	+26
Ultrasound EPDs	
CW	+64
Marb.	+69
REA	+33

Genomic	
Tend	



# Long Yearling Heifers

**3407**  
Tattoo: 3407 M1F-OHF DOB: 8/11/23 Reg. # \*21000216  
Gen: Angus GS  
SYDGEN BLUEPRINT  
**SIRE:** S ARCHITECT 9501  
S BLOSSOM 7514  
BT INCREDIBLE 0368  
**DAM:** EVENSON LADY 1513  
EVENSON LADY 7486

EPDs	
CED	+11
Birth	-.2
Wean	+80
Year	+138
HP	+14.6
Milk	+38
Doc.	+17
Ultrasound EPDs	
CW	+72
Marb.	+64
REA	+55
Genomic	
Tend	23%

\$ Values	
Feed	+109
Grid	+51
Beef	+159

BW	Adj. WW	Wt. 2-11-2025
70	676	1235

**3408**  
Tattoo: 3408 OHF DOB: 8/12/23 Reg. # \*21000217  
Gen: Angus GS  
SYDGEN BLUEPRINT  
**SIRE:** S ARCHITECT 9501  
S BLOSSOM 7514  
JACS RARE FIND 6503  
**DAM:** EVENSON BLACKBIRD 1438  
EVENSON BLACKBIRD 6507

EPDs	
CED	+9
Birth	+8
Wean	+73
Year	+126
HP	+14.9
Milk	+29
Doc.	+21
Ultrasound EPDs	
CW	+57
Marb.	+61
REA	+31
Genomic	
Tend	

\$ Values	
Feed	+94
Grid	+46
Beef	+139

BW	Adj. WW	Wt. 2-11-2025
68	627	1145

**3409**  
Tattoo: 3409 OHF DOB: 8/12/23 Reg. # \*21013797  
Gen: Angus GS  
SYDGEN BLUEPRINT  
**SIRE:** S ARCHITECT 9501  
S BLOSSOM 7514  
LT REVERED  
**DAM:** EVENSON QUEEN DOLLY 1437  
EVENSON QUEEN DOLLY 5451

EPDs	
CED	+13
Birth	-1.0
Wean	+75
Year	+130
HP	+17.8
Milk	+32
Doc.	+19
Ultrasound EPDs	
CW	+74
Marb.	+73
REA	+35
Genomic	
Tend	

\$ Values	
Feed	+123
Grid	+47
Beef	+170

BW	Adj. WW	Wt. 2-11-2025
68	587	1210

**3410**  
Tattoo: 3410 OHF DOB: 8/12/23 Reg. # \*21000218  
Gen: Angus GS  
KESSLERS COMMODORE 385  
**SIRE:** EVENSON COMMODORE 0160  
EVENSON ANN 685  
BT INCREDIBLE 0368  
**DAM:** EVENSON BLACKBIRD 1436  
EVENSON BLACKBIRD 7465

EPDs	
CED	+10
Birth	+0
Wean	+87
Year	+142
HP	+12.4
Milk	+22
Doc.	+15
Ultrasound EPDs	
CW	+69
Marb.	+50
REA	+1.08
Genomic	
Tend	

\$ Values	
Feed	+114
Grid	+52
Beef	+166

BW	Adj. WW	Wt. 2-11-2025
66	663	1320

**3412**  
Tattoo: 3412 DOB: 8/13/23 Reg. # \*21012707  
Gen: Angus GS  
K C F BENNETT CONSENT Y75  
**SIRE:** K C F BENNETT SUMMATION  
THOMAS PATRICIA 9705  
KESSLERS COMMODORE 6516  
**DAM:** EVENSON BLACKBIRD 1428  
EVENSON BLACKBIRD 6506

EPDs	
CED	+9
Birth	+3
Wean	+78
Year	+132
HP	+14.3
Milk	+33
Doc.	+28
Ultrasound EPDs	
CW	+71
Marb.	+43
REA	+98
Genomic	
Tend	

\$ Values	
Feed	+119
Grid	+44
Beef	+163

BW	Adj. WW	Wt. 2-11-2025
62	600	1080

**3415**  
Tattoo: 3415 M1F DOB: 8/14/23 Reg. # \*21013799  
Gen: Angus GS  
SYDGEN BLUEPRINT  
**SIRE:** S ARCHITECT 9501  
S BLOSSOM 7514  
EVENSON NEW FRONTIER 8139  
**DAM:** EVENSON THICKSET 1506  
EVENSON THICKSET 6437

EPDs	
CED	+10
Birth	+1.6
Wean	+89
Year	+151
HP	+12.8
Milk	+31
Doc.	+25
Ultrasound EPDs	
CW	+66
Marb.	+50
REA	+27
Genomic	
Tend	

\$ Values	
Feed	+98
Grid	+42
Beef	+139

BW	Adj. WW	Wt. 2-11-2025
66	642	1250



### 3420 EVENSON BLACKBIRD 3420

Tattoo: 3420 M1F-OHF DOB: 8/16/23 Reg. # 21000220  
Gen: Angus GS

SIRE: EVENSON COMMODORE 6516  
EVENSON ANN 685

DAM: EVENSON NEW FRONTIER 8139  
EVENSON BLACKBIRD 1537  
EVENSON BLACKBIRD 4537



\$ Values	
Feed	+84
Grid	+55
Beef	+139

EPDs	
CED	+8
Birth	+1.0
Wean	+78
Year	+128
HP	+7.8
Milk	+35
Doc.	+18
Ultrasound EPDs	
CW	+55
Marb.	+69
REA	+4.1

BW	Adj. WW	Wt. 2-11-2025
68	690	1185

Genomic	
Tend	15%



### 3421 EVENSON QUEEN 3421

Tattoo: 3421 M1F DOB: 8/16/23 Reg. # \*21000221  
Gen: Angus GS

SIRE: RIDL APPEARANCE 707  
BLACKBIRD 1434 BAF

DAM: BT INCREDIBLE 0368  
EVENSON QUEEN 0408  
EVENSON QUEEN 8524

\$ Values	
Feed	+82
Grid	+25
Beef	+108

EPDs	
CED	+5
Birth	+2.9
Wean	+76
Year	+135
HP	+11.7
Milk	+32
Doc.	+24
Ultrasound EPDs	
CW	+48
Marb.	+1.14
REA	+3.9

BW	Adj. WW	Wt. 2-11-2025
614	1250	

Genomic	
Tend	23%



### 3422 EVENSON ELBA 3422

Tattoo: 3422 M1F-OHF DOB: 8/17/23 Reg. # \*21000751  
Gen: Angus GS

SIRE: KR QUALITY 8525  
FREYS QUALITY 0187  
F A R MISS BLACKCAP 51A

DAM: KESSLERS COMMODORE 6516  
EVENSON ELBA 0467  
EVENSON ELBA 7511

\$ Values	
Feed	+106
Grid	+37
Beef	+143

EPDs	
CED	+5
Birth	+1.3
Wean	+88
Year	+150
HP	+13.2
Milk	+27
Doc.	+18
Ultrasound EPDs	
CW	+69
Marb.	+35
REA	+5.0

BW	Adj. WW	Wt. 2-11-2025
84	708	1260

Genomic	
Tend	



### 3423 EVENSON BLACK GIRL 3423

Tattoo: 3423 OHF DOB: 8/18/23 Reg. # \*21000222  
Gen: Angus GS

SIRE: FREYS APPEARANCE  
RIDL APPEARANCE 707  
BLACKBIRD 1434 BAF

DAM: HA COWBOY UP 5405  
EVENSON BLACK GIRL 0487  
EVENSON BLACK GIRL 6444

\$ Values	
Feed	+83
Grid	+34
Beef	+117

EPDs	
CED	+2
Birth	+3.0
Wean	+63
Year	+116
HP	+11.4
Milk	+38
Doc.	+30
Ultrasound EPDs	
CW	+46
Marb.	+4.1
REA	+3.6

BW	Adj. WW	Wt. 2-11-2025
82	620	1220

Genomic	
Tend	13%



### 3431 EVENSON BLACKBIRD 3431

Tattoo: 3431 DOB: 8/21/23 Reg. # \*21000228  
Gen: Angus GS

SIRE: KR QUALITY 8525  
FREYS QUALITY 0187  
F A R MISS BLACKCAP 51A

DAM: JINDRA ACCLAIM  
EVENSON BLACKBIRD 9443  
EVENSON BLACKBIRD 6416

\$ Values	
Feed	+105
Grid	+51
Beef	+156

EPDs	
CED	+3
Birth	+2.5
Wean	+68
Year	+131
HP	+14.5
Milk	+29
Doc.	+32
Ultrasound EPDs	
CW	+57
Marb.	+65
REA	+5.5

BW	Adj. WW	Wt. 2-11-2025
88	650	1325

Genomic	
Tend	



### 3433 EVENSON QUEEN 3433

Tattoo: 3433 OHF DOB: 8/22/23 Reg. # \*21000229  
Gen: Angus GS

SIRE: KR QUALITY 8525  
FREYS QUALITY 0187  
F A R MISS BLACKCAP 51A

DAM: KESSLERS COMMODORE 6516  
EVENSON QUEEN 0471  
EVENSON QUEEN 3529

\$ Values	
Feed	+113
Grid	+47
Beef	+160

EPDs	
CED	+4
Birth	+2.8
Wean	+86
Year	+152
HP	+12.9
Milk	+27
Doc.	+26
Ultrasound EPDs	
CW	+65
Marb.	+6.0
REA	+3.5

BW	Adj. WW	Wt. 2-11-2025
82	612	1315

Genomic	
Tend	20%



### 3439 EVENSON QUEEN 3439

Tattoo: 3439 M1F-OHF DOB: 8/24/23 Reg. # \*21000233  
Gen: Angus GS

SIRE: FREYS APPEARANCE  
RIDL APPEARANCE 707  
BLACKBIRD 1434 BAF

DAM: BT INCREDIBLE 0368  
EVENSON QUEEN 0446  
EVENSON QUEEN 7509

\$ Values	
Feed	+107
Grid	+28
Beef	+135

EPDs	
CED	+9
Birth	+8
Wean	+73
Year	+135
HP	+12.0
Milk	+38
Doc.	+16
Ultrasound EPDs	
CW	+64
Marb.	+3.0
REA	+3.7

BW	Adj. WW	Wt. 2-11-2025
78	725	1295

Genomic	
Tend	20%



### 3445 EVENSON QUEEN 3545

Tattoo: 3445 OHF DOB: 8/26/23 Reg. # 21000238  
Gen: Angus GS

SIRE: KESSLERS COMMODORE 6516  
EVENSON COMMODORE 0160  
EVENSON ANN 685

DAM: MOHNEN IMPRESSIVE 1093  
EVENSON QUEEN 5404  
EVENSON QUEEN 3561

\$ Values	
Feed	+103
Grid	+32
Beef	+135

EPDs	
CED	+6
Birth	+1.0
Wean	+87
Year	+132
HP	+10.5
Milk	+29
Doc.	+33
Ultrasound EPDs	
CW	+71
Marb.	+2.25
REA	+6.6

BW	Adj. WW	Wt. 2-11-2025
64	669	1220

Genomic	
Tend	





### EVENSON QUEEN 3446

Tattoo: 3446 OHF DOB: 8/27/23 Reg. # \*21000239  
Gen: Angus GS

SIRE: DUPPONG STUNNER 1182  
WC BLACKBIRD 9167

DAM: EVENSON QUEEN 1452  
EVENSON QUEEN 8416

\$ Values	
Feed	+104
Grid	+46
Beef	+150

EPDs	
CED	+9
Birth	+2
Wean	+80
Year	+127
HP	+11.6
Milk	+37
Doc.	+22
Ultrasound EPDs	
CW	+63
Marb.	+68
REA	+35

BW	Adj. WW	Wt. 2-11-2025
68	675	1180

Genomic	
Tend	20%



### EVENSON QUEEN 3447

Tattoo: 3447 M1F-OHF DOB: 8/27/23 Reg. # \*21000240  
Gen: Angus GS

SIRE: RIDL APPEARANCE 707  
BLACKBIRD 1434 BAF

DAM: EVENSON QUEEN 0413  
EVENSON QUEEN 7497

\$ Values	
Feed	+93
Grid	+20
Beef	+113

EPDs	
CED	+11
Birth	-.6
Wean	+63
Year	+109
HP	+12.8
Milk	+30
Doc.	+29
Ultrasound EPDs	
CW	+48
Marb.	+0.06
REA	+4.6

BW	Adj. WW	Wt. 2-11-2025
66	586	1155

Genomic	
Tend	



### EVENSON THICKSET 3452

Tattoo: 3452 DOB: 8/28/23 Reg. # 21013822  
Gen: Angus GS

SIRE: S ARCHITECT 9501  
S BLOSSOM 7514

DAM: EVENSON THICKSET 6437  
EVENSON THICKSET 0724

\$ Values	
Feed	+118
Grid	+42
Beef	+160

EPDs	
CED	+6
Birth	+2.2
Wean	+90
Year	+149
HP	+15.0
Milk	+29
Doc.	+25
Ultrasound EPDs	
CW	+83
Marb.	+3.6
REA	+7.7

BW	Adj. WW	Wt. 2-11-2025
70	741	1310

Genomic	
Tend	



### EVENSON BLACKBIRD 3455

Tattoo: 3455 DOB: 8/29/23 Reg. # 21012816  
Gen: Angus GS

SIRE: K C F BENNETT SUMMATION  
THOMAS PATRICIA 9705

DAM: EVENSON BLACKBIRD 6506  
EVENSON BLACKBIRD 4592

\$ Values	
Feed	+97
Grid	+38
Beef	+135

EPDs	
CED	+15
Birth	-2.8
Wean	+63
Year	+117
HP	+12.8
Milk	+34
Doc.	+23
Ultrasound EPDs	
CW	+47
Marb.	+3.4
REA	+7.0

BW	Adj. WW	Wt. 2-11-2025
615		1120

Genomic	
Tend	



### EVENSON LADY 3456

Tattoo: 3456 DOB: 8/29/23 Reg. # 21000243  
Gen: Angus GS

SIRE: EVENSON SOUTHERN CHARM 086  
EVENSON QUEEN 693

DAM: EVENSON LADY 6417  
EVENSON LADY 4533

\$ Values	
Feed	+82
Grid	+52
Beef	+133

EPDs	
CED	+5
Birth	+2.2
Wean	+77
Year	+124
HP	+10.0
Milk	+30
Doc.	+26
Ultrasound EPDs	
CW	+52
Marb.	+5.9
REA	+7.3

BW	Adj. WW	Wt. 2-11-2025
76	695	1240

Genomic	
Tend	



### EVENSON BLACKBIRD 3463

Tattoo: 3463 OHF DOB: 8/30/23 Reg. # 21013825  
Gen: Angus GS

SIRE: S ARCHITECT 9501  
S BLOSSOM 7514

DAM: EVENSON QUEEN 3529  
EVENSON QUEEN 0760

\$ Values	
Feed	+96
Grid	+32
Beef	+128

EPDs	
CED	+2
Birth	+3.4
Wean	+99
Year	+149
HP	+16.7
Milk	+12
Doc.	+32
Ultrasound EPDs	
CW	+65
Marb.	+1.18
REA	+5.0

BW	Adj. WW	Wt. 2-11-2025
80	754	1260

Genomic	
Tend	



### EVENSON QUEEN 3465

Tattoo: 3465 OHF DOB: 8/30/23 Reg. # 21000251  
Gen: Angus GS

SIRE: EVENSON SOUTHERN CHARM 086  
EVENSON QUEEN 693

DAM: EVENSON QUEEN 6505  
EVENSON QUEEN 2533



\$ Values	
Feed	+114
Grid	+64
Beef	+178

EPDs	
CED	+8
Birth	+1.1
Wean	+63
Year	+121
HP	+10.6
Milk	+29
Doc.	+19
Ultrasound EPDs	
CW	+62
Marb.	+9.0
REA	+8.0

BW	Adj. WW	Wt. 2-11-2025
74	688	1230

Genomic	
Tend	



### EVENSON BLACKBIRD 3466

Tattoo: 3466 DDF-OHF DOB: 8/30/23 Reg. # \*21000252  
Gen: Angus GS

SIRE: EVENSON SOUTHERN CHARM 086  
EVENSON QUEEN 693

DAM: EVENSON BLACKBIRD  
EVENSON BLACKBIRD 2510

\$ Values	
Feed	+85
Grid	+56
Beef	+142

EPDs	
CED	+5
Birth	+2.3
Wean	+67
Year	+114
HP	+16.1
Milk	+23
Doc.	+24
Ultrasound EPDs	
CW	+54
Marb.	+6.1
REA	+9.8

BW	Adj. WW	Wt. 2-11-2025
74	578	1165

Genomic	
Tend	



### 3476 EVENSON QUEEN 3476

Tattoo: 3476 OHF DOB: 9/01/23 Reg. # \*2101281  
Gen: Angus GS

SIRE: K C F BENNETT CONSENT Y75  
BENNETT SUMMATION  
THOMAS PATRICIA 9705

DAM: EVENSON STETSON 100 X 629  
EVENSON QUEEN 8416  
EVENSON QUEEN 6432

\$ Values	
Feed	+126
Grid	+47
Beef	+173

EPDs	
CED	+16
Birth	-5
Wean	+76
Year	+142
HP	+7.5
Milk	+40
Doc.	+26
Ultrasound EPDs	
CW	+76
Marb.	+52
REA	+9.8

BW	Adj. WW	Wt. 2-11-2025
68	626	1200

Genomic	
Tend	



### 3483 EVENSON QUEEN 3483

Tattoo: 3483 OHF DOB: 9/02/23 Reg. # \*21012800  
Gen: Angus GS

SIRE: K C F BENNETT CONSENT Y75  
BENNETT SUMMATION  
THOMAS PATRICIA 9705

DAM: HA PRIME CUT 4493  
EVENSON QUEEN 8422  
EVENSON QUEEN 3535

\$ Values	
Feed	+102
Grid	+58
Beef	+160

BW	Adj. WW	Wt. 2-11-2025
70	665	1145

EPDs	
CED	+12
Birth	-.6
Wean	+74
Year	+131
HP	+8.9
Milk	+33
Doc.	+28
Ultrasound EPDs	
CW	+59
Marb.	+.72
REA	+.93

Genomic	
Tend	



### 3488 EVENSON LADY 3488

Tattoo: 3488 DOB: 9/03/23 Reg. # 21000260  
Gen: Angus GS

SIRE: FREYS APPEARANCE  
RIDL APPEARANCE 707  
BLACKBIRD 1434 BAF

DAM: JINDRA KINETIC  
EVENSON LADY 7473  
EVENSON LADY 4502

\$ Values	
Feed	+105
Grid	+29
Beef	+134

EPDs	
CED	+5
Birth	+2.2
Wean	+73
Year	+127
HP	+12.8
Milk	+28
Doc.	+28
Ultrasound EPDs	
CW	+61
Marb.	+23
REA	+5.2

BW	Adj. WW	Wt. 2-11-2025
78	729	1235

Genomic	
Tend	



### 3490 EVENSON QUEEN 3490

Tattoo: 3490 OHF DOB: 9/04/23 Reg. # \*21012798  
Gen: Angus GS

SIRE: K C F BENNETT CONSENT Y75  
BENNETT SUMMATION  
THOMAS PATRICIA 9705

DAM: RIDL APPEARANCE 707  
EVENSON QUEEN 9493  
EVENSON QUEEN 7456

\$ Values	
Feed	+113
Grid	+41
Beef	+154

BW	Adj. WW	Wt. 2-11-2025
72	614	1140

EPDs	
CED	+9
Birth	+1.2
Wean	+75
Year	+131
HP	+12.5
Milk	+29
Doc.	+22
Ultrasound EPDs	
CW	+70
Marb.	+.40
REA	+1.04

Genomic	
Tend	



### 3494 EVENSON QUEEN DOLLY 3494

Tattoo: 3494 M1F DOB: 9/04/23 Reg. # 21000261  
Gen: Angus GS

SIRE: BUBS SOUTHERN CHARM AA31  
EVENSON SOUTHERN CHARM 086  
EVENSON QUEEN 693

DAM: SITZ UPWARD 307R  
EVENSON QUEEN DOLLY 4583  
EVENSON QUEEN DOLLY 848



\$ Values	
Feed	+94
Grid	+60
Beef	+153

EPDs	
CED	+6
Birth	+2.3
Wean	+68
Year	+112
HP	+17.9
Milk	+28
Doc.	+16
Ultrasound EPDs	
CW	+54
Marb.	+.81
REA	+6.1

BW	Adj. WW	Wt. 2-11-2025
70	632	1155

Genomic	
Tend	



### 3497 EVENSON QUEEN 3497

Tattoo: 3497 OHF DOB: 9/05/23 Reg. # \*21016838  
Gen: Angus GS

SIRE: KR QUALITY 8525  
FREYS QUALITY 0187  
F A R MISS BLACKCAP 51A

DAM: EVENSON STETSON 100X 730  
EVENSON QUEEN 0494  
EVENSON QUEEN 414



\$ Values	
Feed	+97
Grid	+58
Beef	+155

BW	Adj. WW	Wt. 2-11-2025
78	614	1225

EPDs	
CED	+5
Birth	+2.0
Wean	+70
Year	+120
HP	+14.5
Milk	+30
Doc.	+24
Ultrasound EPDs	
CW	+58
Marb.	+.77
REA	+.36

Genomic	
Tend	11%



### 3502 EVENSON BLACKBIRD 3502

Tattoo: 3502 DOB: 9/07/23 Reg. # 21000266  
Gen: Angus GS

SIRE: KESSLERS COMMODORE 6516  
EVENSON COMMODORE 0160  
EVENSON ANN 685

DAM: MOHNEN IMPRESSIVE 1093  
EVENSON BLACKBIRD 5461  
EVENSON BLACKBIRD 5183

\$ Values	
Feed	+107
Grid	+49
Beef	+156

EPDs	
CED	+7
Birth	+1.0
Wean	+67
Year	+124
HP	+13.1
Milk	+34
Doc.	+30
Ultrasound EPDs	
CW	+63
Marb.	+.67
REA	+.24

BW	Adj. WW	Wt. 2-11-2025
80	622	1205

Genomic	
Tend	



### 3516 EVENSON MARY 3516

Tattoo: 3516 M1F-OHF DOB: 9/17/23 Reg. # \*21000276  
Gen: Angus GS

SIRE: FREYS APPEARANCE  
RIDL APPEARANCE 707  
BLACKBIRD 1434 BAF

DAM: JINDRA MEDALLION  
EVENSON MARY 0528  
EVENSON MARY 7434

\$ Values	
Feed	+86
Grid	+41
Beef	+127

BW	Adj. WW	Wt. 2-11-2025
72	640	1235

EPDs	
CED	+2
Birth	+3.5
Wean	+78
Year	+133
HP	+14.9
Milk	+26
Doc.	+16
Ultrasound EPDs	
CW	+50
Marb.	+.53
REA	+.33

Genomic	
Tend	



# Evenson Angus

PO Box 1089  
Hettinger, ND 58639



Heiken Broadview  
March 20, 2025  
Lemmon, SD

FIRST-CLASS  
Presorted  
U.S. Postage  
**PAID**  
UNITED PRINTING

A2Z PRINTING - BOWMAN, ND - 701-523-4656 • 888-768-4656